

PACO21315

---

## Product Information

**Size:**

100ul

**Reactivity:**

Human, Mouse, Rat

**Source:**

Rabbit

**Isotype:**

IgG

**Applications:**

ELISA, WB, IHC

**Recommended dilutions:**

ELISA:1:2000-1:10000, WB:1:500-1:2000,  
IHC:1:50-1:200

**Protein Background:**

ERK1 p42 MAP kinase plays a critical role in the regulation of cell growth and differentiation. Activated by a wide variety of extracellular signals including growth and neurotrophic factors, cytokines, hormones and neurotransmitters. ERK2 p44 MAP kinase plays a critical role in the regulation of cell growth and differentiation. Acts as an integration point for multiple biochemical signals, and is involved in a wide variety of cellular processes such as proliferation, differentiation, transcription regulation and development.

**Gene ID:**

MAPK3/MAPK1

**Uniprot**

P27361/P28482

**Synonyms:**

Extracellular signal-regulated kinase 1, ERK-1, Insulin-stimulated MAP2 kinase, MAP kinase 1, MAPK 1, p44-ERK1, ERT2, p44-MAPK, Microtubule-associated protein 2 kinase extracellular signal-regulated kinase 1, ERK-1, Insulin-stimulated MAP2 kinase, MAP kin

**Immunogen:**

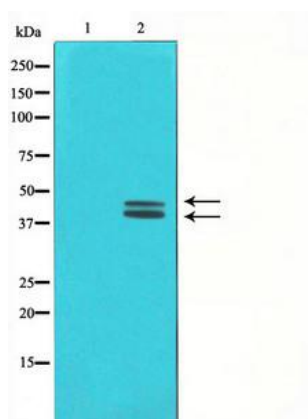
A Synthesized peptide derived from human ERK1/2.

**Storage:**

Rabbit IgG in phosphate buffered saline , pH 7.4, 150mM NaCl, 0.02% sodium azide and 50% glycerol.

## Product Images

---



Western blot analysis on COLO205 cell lysate using ERK1/2 Antibody.