

Product Information

Size:

100ul

Reactivity:

Human, Mouse, Rat

Source:

Rabbit

Isotype:

IgG

Applications:

ELISA, WB

Recommended dilutions:

ELISA:1:2000-1:10000, WB:1:500-1:2000

Protein Background:

Protein kinase C (PKC) is a family of serine- and threonine-specific protein kinases that can be activated by calcium and the second messenger diacylglycerol. PKC family members phosphorylate a wide variety of protein targets and are known to be involved in diverse cellular signaling pathways. PKC family members also serve as major receptors for phorbol esters, a class of tumor promoters.

Gene ID:

PRKCZ

Uniprot

Q05513

Synonyms:

EC 2.7.11.13, KPCT, PKC θ , PKC μ , PRKCQ, PRKCT, Protein kinase C, θ type, kinase PKC θ , nPKC θ

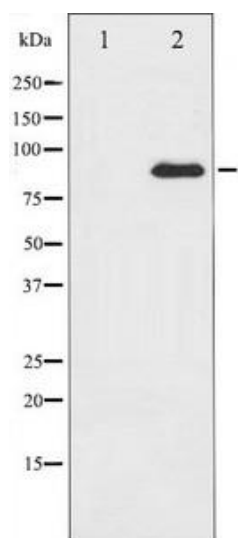
Immunogen:

A Synthesized peptide derived from human PKC θ .

Storage:

Rabbit IgG in phosphate buffered saline , pH 7.4, 150mM NaCl, 0.02% sodium azide and 50% glycerol.

Product Images



Western blot analysis of PKC theta expression in PMA treated Jurkat whole cell lysates, The lane on the left is treated with the antigen-specific peptide.