

### Product Information

**Size:**

100ul

**Reactivity:**

Human

**Source:**

Rabbit

**Isotype:**

IgG

**Applications:**

ELISA, WB, IHC

**Recommended dilutions:**

ELISA:1:2000-1:10000, WB:1:500-1:2000,  
IHC:1:50-1:200

**Protein Background:**

Protein kinase C (PKC) is a family of serine- and threonine-specific protein kinases that can be activated by calcium and the second messenger diacylglycerol. PKC family members phosphorylate a wide variety of protein targets and are known to be involved in diverse cellular signaling pathways.

**Gene ID:**

PRKCD

**Uniprot**

Q05655

**Synonyms:**

EC 2.7.11.13, KPCD, PKC $\delta$ , PRKCD, kinase PKC $\delta$ , nPKC $\delta$ ,  
 $\delta$

**Immunogen:**

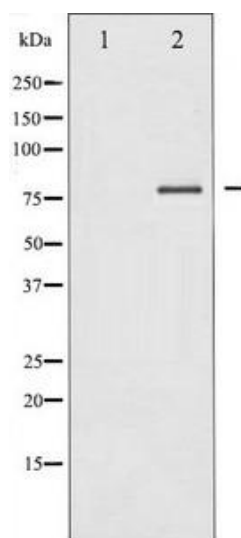
A Synthesized peptide derived from human PKC $\delta$ .

**Storage:**

Rabbit IgG in phosphate buffered saline , pH 7.4, 150mM NaCl, 0.02% sodium azide and 50% glycerol.

## Product Images

---



Western blot analysis of PKC delta expression in MCF7 whole cell lysates, The lane on the left is treated with the antigen-specific peptide.