

Product Information

Size:

100ul(100ug)

Reactivity:

Human, Mouse, Rat

Source:

Rabbit

Isotype:

IgG

Applications:

ELISA, WB, IHC

Recommended dilutions:

ELISA:1:2000-1:10000, WB:1:500-1:2000,
IHC:1:50-1:200

Protein Background:

HS1 (HCLS1, LckBP1, p75) is a protein kinase substrate that is expressed only in tissues and cells of hematopoietic origin. HS1 contains four cortactin repeats and a single SH3 domain. This intracellular protein is phosphorylated following immune receptor activation, which promotes recruitment of HS1 to the immune synapse. Phosphorylation of HS1 is required to regulate actin dynamics and provide docking sites for many other signaling molecules, such as Vav1 and PLC gamma 1. HS1 also plays an important role in platelet activation.

Gene ID:

HCLS1

Uniprot

P14317

Synonyms:

HS1; HCLS1; LckBP1; p75; CTTNL

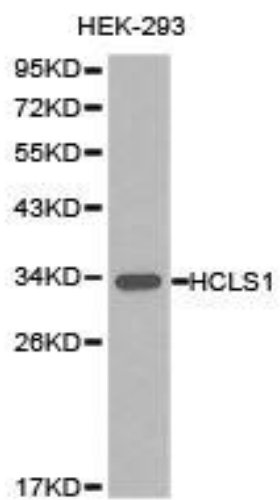
Immunogen:

Recombinant protein of human HCLS1.

Storage:

Buffer: PBS with 0.02% sodium azide, 50% glycerol, pH7.3.

Product Images



Western blot analysis of extracts of HEK-293 cell lines, using HCLS1 antibody.