

ERBB2 Antibody



PACO21237

Product Information

Size:

100ul(100ug)

Reactivity:

Human, Mouse, Rat

Source:

Rabbit

Isotype:

IgG

Applications:

ELISA, WB, IHC

Recommended dilutions:

ELISA:1:2000-1:10000, WB:1:500-1:1000,
IHC:1:50-1:100

Protein Background:**Gene ID:**

ERBB2

Uniprot

P04626

Synonyms:

ErbB2; CD340; HER-2; HER-2/neu; HER2; NEU; NGL; TKR1

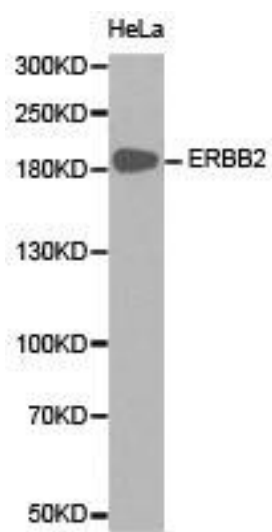
Immunogen:

A Synthetic peptide of human ERBB2.

Storage:

Buffer: PBS with 0.02% sodium azide, 50% glycerol, pH7.3.

Product Images



Western blot analysis of extracts of HeLa cell line, using ERBB2 antibody.