

# BUB1 Antibody



PACO21214

---

## Product Information

**Size:**

100ul(100ug)

**Reactivity:**

Human, Mouse, Rat

**Source:**

Rabbit

**Isotype:**

IgG

**Applications:**

ELISA, WB, IHC

**Recommended dilutions:**

ELISA:1:2000-1:10000, WB:1:500-1:2000,  
IHC:1:50-1:200

**Protein Background:**

**Gene ID:**

BUB1

**Uniprot**

O43683

**Synonyms:**

BUB1; BUB1A; BUB1L; hBUB1

**Immunogen:**

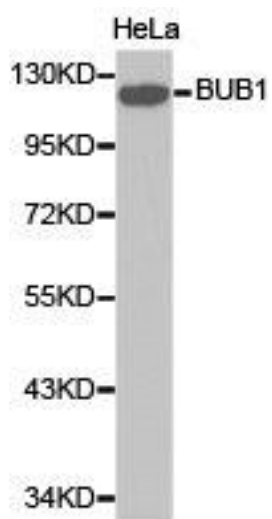
Recombinant protein of human BUB1.

**Storage:**

Buffer: PBS with 0.02% sodium azide, 50% glycerol, pH7.3.

## Product Images

---



Western blot analysis of extracts of HeLa cell line, using BUB1 antibody.