

PACO21140

---

## Product Information

**Size:**

100ul(100ug)

**Reactivity:**

Human, Mouse, Rat

**Source:**

Rabbit

**Isotype:**

IgG

**Applications:**

ELISA, WB, IHC

**Recommended dilutions:**

ELISA:1:2000-1:10000, WB:1:500-1:2000,  
IHC:1:50-1:200

**Protein Background:**

FSHR, also named as LGR1, belongs to the G-protein coupled receptor 1 family and FSH/LSH/TSH subfamily. FSHR is a receptor for follicle-stimulating hormone. The activity of this receptor is mediated by G proteins which activate adenylate cyclase. Defects in FSHR are a cause of ovarian dysgenesis type 1 (ODG1). Defects in FSHR are a cause of ovarian hyperstimulation syndrome (OHSS). The antibody is special to FSHR.

**Gene ID:**

FSHR

**Uniprot**

P23945

**Synonyms:**

FSHR; FSHRO; LGR1; MGC141667; MGC141668; ODG1

**Immunogen:**

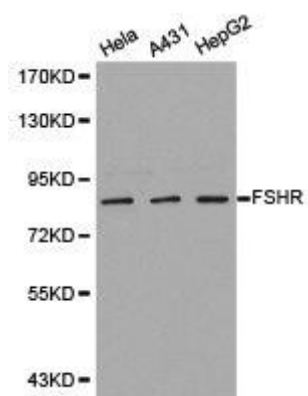
Recombinant protein of human FSHR.

**Storage:**

Buffer: PBS with 0.02% sodium azide, 50% glycerol, pH7.3.

## Product Images

---



Western blot analysis of extracts of various cell lines, using FSHR antibody.