

# F11R Antibody



PACO21119

---

## Product Information

**Size:**

100ul(100ug)

**Reactivity:**

Human, Mouse, Rat

**Source:**

Rabbit

**Isotype:**

IgG

**Applications:**

ELISA, WB, IHC

**Recommended dilutions:**

ELISA:1:2000-1:10000, WB:1:500-1:2000,  
IHC:1:50-1:200

**Protein Background:**

Tight junctions represent one mode of cell-to-cell adhesion in epithelial or endothelial cell sheets, forming continuous seals around cells and serving as a physical barrier to prevent solutes and water from passing freely through the paracellular space. The protein encoded by this immunoglobulin superfamily gene member is an important regulator of tight junction assembly in epithelia. In addition, the encoded protein can act as (1) a receptor for reovirus, (2) a ligand for the integrin LFA1, involved in leukocyte transmigration, and (3) a platelet receptor. Multiple 5 alternatively spliced variants, encoding the same protein, have been identified but their biological validity has not been established.

**Gene ID:**

F11R

**Uniprot**

Q9Y624

**Synonyms:**

F11R; CD321; JAM; JAM-1; JAM-A; JAM1; JAMA; JCAM; KAT; PAM-1

**Immunogen:**

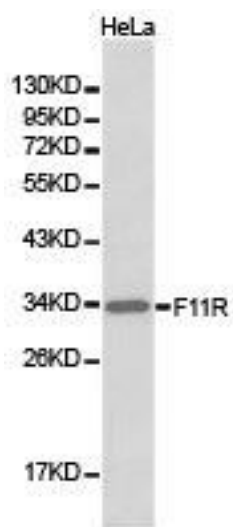
Recombinant protein of human F11R.

**Storage:**

Buffer: PBS with 0.02% sodium azide, 50% glycerol, pH7.3.

## Product Images

---



Western blot analysis of HeLa cell lysate , using F11R antibody.