

## Product Information

**Size:**

100ul(100ug)

**Reactivity:**

Human, Mouse, Rat

**Source:**

Rabbit

**Isotype:**

IgG

**Applications:**

ELISA, WB, IHC

**Recommended dilutions:**

ELISA:1:2000-1:10000, WB:1:500-1:2000,  
IHC:1:50-1:200

**Protein Background:**

Inhibitor of DNA-binding-2 (Id2) is a member of the Id proteins which belong to the helix-loop-helix (HLH) protein family. The Id protein functions by binding to specific transcription factors and preventing their dimerization and DNA binding. Id2 interacts with a wide variety of transcription factors including E proteins, TCS, Pax and the tumor suppressor Rb. Id2 has been shown to be important in regulating cellular differentiation, proliferation, development and tumorigenesis. In tumor cells, increased levels of Id2 functionally inactivate Rb, leading to cellular transformation and cancer. Id2 is therefore a promising therapeutic target for treatment of cancer.

**Gene ID:**

ID2

**Uniprot**

Q02363

**Synonyms:**

ID2; GIG8; ID2A; ID2H; MGC26389; bHLHb26

**Immunogen:**

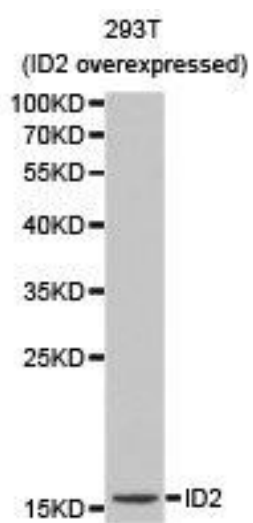
Recombinant protein of human ID2.

**Storage:**

Buffer: PBS with 0.02% sodium azide, 50% glycerol, pH7.3.

## Product Images

---



Western blot analysis of 293T cell lysate using ID2 antibody.