

PACO20877

---

## Product Information

**Size:**

50ul

**Reactivity:**

Human

**Source:**

Rabbit

**Isotype:**

IgG

**Applications:**

ELISA, WB, IHC

**Recommended dilutions:**

ELISA:1:1000-1:2000, WB:1:200-1:1000,  
IHC:1:25-1:100

**Protein Background:**

Deubiquitinase that specifically removes linear ('Met-1'-linked) polyubiquitin chains to substrates and acts as a regulator of angiogenesis and innate immune response. Associates with the LUBAC complex via direct interaction with RNF31 and counteracts its action by cleaving linear polyubiquitin chains to substrates. Required during angiogenesis, craniofacial and neuronal development by regulating the canonical Wnt signaling together with the LUBAC complex. Acts as a negative regulator of NF-kappa-B by counteracting activity of the LUBAC complex. Required for homeostasis of the LUBAC complex by restricting autoubiquitination of the LUBAC complex subunit RNF31. Some results have suggested that OTULIN function is restricted to homeostasis of the LUBAC complex, because it is not stably associated with TNF or NOD2 receptor signaling complexes (RSCs). However, further report have shown that it plays active roles in receptor signaling.

**Gene ID:**

WDR36

**Uniprot**

Q8NI36

**Synonyms:**

WD repeat domain 36

**Immunogen:**

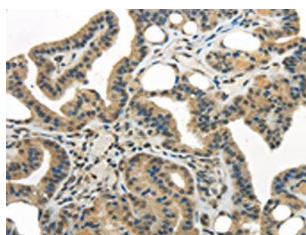
Synthetic peptide of human WDR36.

**Storage:**

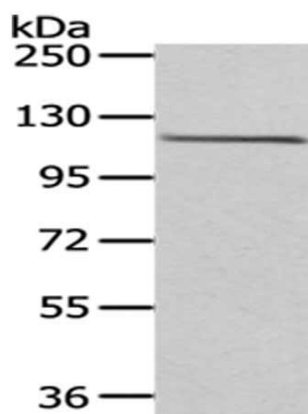
-20&deg; C, pH7.4 PBS, 0.05% NaN<sub>3</sub>, 40% Glycerol

## Product Images

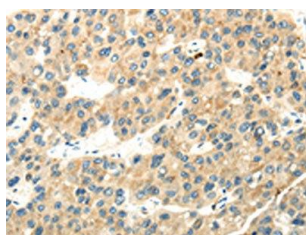
---



The image on the left is immunohistochemistry of paraffin-embedded Human thyroid cancer tissue using PACO20877(WDR36 Antibody) at dilution 1/35, on the right is treated with synthetic peptide. (Original magnification: x—200).



Gel: 6%SDS-PAGE, Lysate: 40 &mu; gPrimary antibody: PACO20877(WDR36 Antibody) at dilution 1/200 dilution, Secondary antibody: Goat anti rabbit IgG at 1/8000 dilution, Exposure time: 1 minute.



The image on the left is immunohistochemistry of paraffin-embedded Human liver cancer tissue using PACO20877(WDR36 Antibody) at dilution 1/35, on the right is treated with synthetic peptide. (Original magnification: x—200).