

### Product Information

**Size:**

50ul

**Reactivity:**

Human, Mouse

**Source:**

Rabbit

**Isotype:**

IgG

**Applications:**

ELISA, IHC

**Recommended dilutions:**

ELISA:1:2000-1:5000, IHC:1:25-1:100

**Protein Background:**

Component of the Polycomb group (PcG) multiprotein BCOR complex, a complex required to maintain the transcriptionally repressive state of some genes, such as BCL6 and the cyclin-dependent kinase inhibitor, CDKN1A. Transcriptional repressor that may be targeted to the DNA by BCL6; this transcription repressor activity may be related to PKC signaling pathway. Represses CDKN1A expression by binding to its promoter, and this repression is dependent on the retinoic acid, response element (RARE element). Promotes cell cycle progression and enhances cell proliferation as well. May have a positive role in tumor cell growth by down-regulating CDKN1A. Component of a Polycomb group (PcG) multiprotein PRC1-like complex, a complex class required to maintain the transcriptionally repressive state of many genes, including Hox genes, throughout development. PcG PRC1 complex acts via chromatin remodeling and modification of histones; it mediates monoubiquitination of histone H2A 'Lys-119', rendering chromatin heritably changed in its expressibility.

**Gene ID:**

TMEFF2

**Uniprot**

Q9UIK5

**Synonyms:**

transmembrane protein with EGF-like and two follistatin-like domains 2

**Immunogen:**

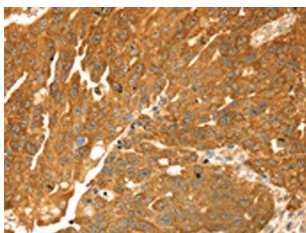
Synthetic peptide of human TMEFF2.

**Storage:**

-20&deg; C, pH7.4 PBS, 0.05% NaN3, 40% Glycerol

## Product Images

---



The image on the left is immunohistochemistry of paraffin-embedded Human breast cancer tissue using PACO20711(TMEFF2 Antibody) at dilution 1/35, on the right is treated with synthetic peptide. (Original magnification: x—200).