

Product Information

Size:

50ul

Reactivity:

Human, Mouse, Rat

Source:

Rabbit

Isotype:

IgG

Applications:

ELISA, WB

Recommended dilutions:

ELISA:1:2000-1:10000, WB:1:1000-1:5000

Protein Background:

Acts as an electrogenic sodium (Na⁺) and chloride (Cl⁻)-dependent sodium-coupled solute transporter, including transport of monocarboxylates (short-chain fatty acid, including L-lactate, D-lactate, pyruvate, acetate, propionate, valerate and butyrate), lactate, monocarboxylate drugs (nicotinate, benzoate, salicylate and 5-aminosalicylate) and ketone bodies (beta-D-hydroxybutyrate, acetoacetate and alpha-ketoisocaproate), with a Na⁺: substrate stoichiometry of between 4:1 and 2:1. Catalyzes passive carrier mediated diffusion of iodide. Mediates iodide transport from the thyrocyte into the colloid lumen through the apical membrane. May be responsible for the absorption of D-lactate and monocarboxylate drugs from the intestinal tract. Acts as a tumor suppressor, suppressing colony formation in colon cancer, prostate cancer and glioma cell lines.

Gene ID:

TRIM71

Uniprot

Q2Q1W2

Synonyms:

tripartite motif containing 71, E3 ubiquitin protein ligase

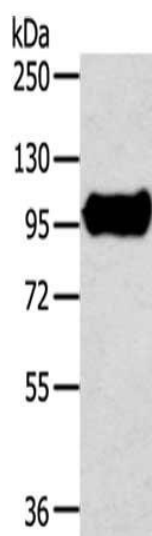
Immunogen:

Synthetic peptide of human TRIM71.

Storage:

-20° C, pH7.4 PBS, 0.05% NaN₃, 40% Glycerol

Product Images



Gel: 6%SDS-PAGE, Lysate: 40 μ g Primary antibody: PACO20703(TRIM71 Antibody) at dilution 1/300 dilution, Secondary antibody: Goat anti rabbit IgG at 1/8000 dilution, Exposure time: 20 seconds.