

PACO20484

Product Information

Size:

50ul

Reactivity:

Human, Mouse, Rat

Source:

Rabbit

Isotype:

IgG

Applications:

ELISA, IHC

Recommended dilutions:

ELISA:1:1000-1:2000, IHC:1:25-1:100

Protein Background:

Catalyzes the formation of the signaling molecule cAMP downstream of G protein-coupled receptors. Functions in signaling cascades downstream of beta-adrenergic receptors in the heart and in vascular smooth muscle cells. Functions in signaling cascades downstream of the vasopressin receptor in the kidney and has a role in renal water reabsorption. Functions in signaling cascades downstream of PTH1R and plays a role in regulating renal phosphate excretion. Functions in signaling cascades downstream of the VIP and SCT receptors in pancreas and contributes to the regulation of pancreatic amylase and fluid secretion. Signaling mediates cAMP-dependent activation of protein kinase PKA. This promotes increased phosphorylation of various proteins, including AKT. Plays a role in regulating cardiac sarcoplasmic reticulum Ca(2+) uptake and storage, and is required for normal heart ventricular contractibility. May contribute to normal heart function.

Gene ID:

SLC24A3

Uniprot

Q9HC58

Synonyms:

solute carrier family 24 (sodium/potassium/calcium exchanger), member 3

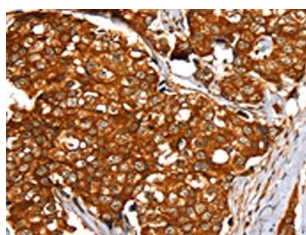
Immunogen:

Synthetic peptide of human SLC24A3.

Storage:

-20°C; C, pH7.4 PBS, 0.05% NaN₃, 40% Glycerol

Product Images



The image on the left is immunohistochemistry of paraffin-embedded Human breast cancer tissue using PACO20484(SLC24A3 Antibody) at dilution 1/20, on the right is treated with synthetic peptide. (Original magnification: x—200).