

PROX1 Antibody



PACO20278

Product Information

Size:

50ul

Reactivity:

Human, Mouse

Source:

Rabbit

Isotype:

IgG

Applications:

ELISA, WB, IHC

Recommended dilutions:

ELISA:1:2000-1:5000, WB:1:500-1:2000,
IHC:1:25-1:100

Protein Background:

Acts as a transcriptional activator: mediates transcriptional activation by binding to E box-containing promoter consensus core sequences 5'-CANNTG-3'. Associates with the p300/CBP transcription coactivator complex to stimulate transcription of the secretin gene as well as the gene encoding the cyclin-dependent kinase inhibitor CDKN1A. Contributes to the regulation of several cell differentiation pathways, like those that promote the formation of early retinal ganglion cells, inner ear sensory neurons, granule cells forming either the cerebellum or the dentate gyrus cell layer of the hippocampus, endocrine islet cells of the pancreas and enteroendocrine cells of the small intestine. Together with PAX6 or SIX3, is required for the regulation of amacrine cell fate specification. Also required for dendrite morphogenesis and maintenance in the cerebellar cortex. Associates with chromatin to enhancer regulatory elements in genes encoding key transcriptional regulators of neurogenesis.

Gene ID:

PROX1

Uniprot

Q92786

Synonyms:

prospero homeobox 1

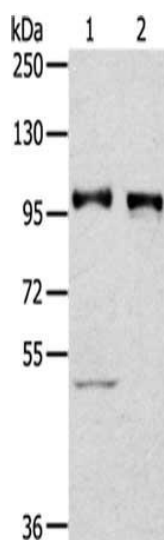
Immunogen:

Synthetic peptide of human PROX1.

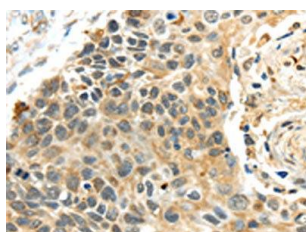
Storage:

-20° C, pH7.4 PBS, 0.05% NaN₃, 40% Glycerol

Product Images



Gel: 6%SDS-PAGE, Lysate: 40 ug, Lane 1-2: Human fetal liver tissue, 231 cells, Primary antibody: PACO20278(PROX1 Antibody) at dilution 1/300 dilution, Secondary antibody: Goat anti rabbit IgG at 1/8000 dilution, Exposure time: 2 minutes.



The image on the left is immunohistochemistry of paraffin-embedded Human esophagus cancer tissue using PACO20278(PROX1 Antibody) at dilution 1/40, on the right is treated with synthetic peptide. (Original magnification: x—200).