

PACO20242

---

## Product Information

**Size:**

50ul

**Reactivity:**

Human

**Source:**

Rabbit

**Isotype:**

IgG

**Applications:**

ELISA, IHC

**Recommended dilutions:**

ELISA:1:1000-1:2000, IHC:1:25-1:100

**Protein Background:**

Transcriptional repressor. Binds specifically to the DNA sequence 5'-GACTNGACT-3'. Has tumor suppressor activity. May play a role in control of cell proliferation and/or neural cell development. Regulates proliferation of early T progenitor cells by maintaining expression of HES1. Also plays a role in antero-posterior specification of the axial skeleton and negative regulation of the self-renewal activity of hematopoietic stem cells. Component of a Polycomb group (PcG) multiprotein PRC1-like complex, a complex class required to maintain the transcriptionally repressive state of many genes, including Hox genes, throughout development. PcG PRC1 complex acts via chromatin remodeling and modification of histones; it mediates monoubiquitination of histone H2A 'Lys-119', rendering chromatin heritably changed in its expressibility. Is not functionally redundant with BMI1; unlike BMI1 does not stimulate the E3 ubiquitin-protein ligase activity in a reconstituted PRC1-like complex.

**Gene ID:**

PLCL1

**Uniprot**

Q15111

**Synonyms:**

phospholipase C-like 1

**Immunogen:**

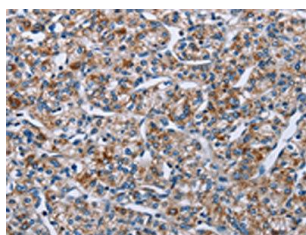
Synthetic peptide of human PLCL1.

**Storage:**

-20&deg; C, pH7.4 PBS, 0.05% NaN<sub>3</sub>, 40% Glycerol

## Product Images

---



The image on the left is immunohistochemistry of paraffin-embedded Human prostate cancer tissue using PACO20242(PLCL1 Antibody) at dilution 1/40, on the right is treated with synthetic peptide. (Original magnification: x—200).