

## Product Information

**Size:**

50ul

**Reactivity:**

Human, Mouse, Rat

**Source:**

Rabbit

**Isotype:**

IgG

**Applications:**

ELISA, WB, IHC

**Recommended dilutions:**

ELISA:1:2000-1:10000, WB:1:500-1:2000,  
IHC:1:50-1:200

**Protein Background:**

Important transcription factor regulating the expression of genes involved in immune and inflammatory responses. Plays also a significant role in adipogenesis, as well as in the gluconeogenic pathway, liver regeneration, and hematopoiesis. The consensus recognition site is 5'-T[**TG**]NNGNAA[**TG**]-3'. Its functional capacity is governed by protein interactions and post-translational protein modifications. During early embryogenesis, plays essential and redundant functions with CEBPA. Has a promototic effect on many cell types such as hepatocytes and adipocytes but has an antiproliferative effect on T-cells by repressing MYC expression, facilitating differentiation along the T-helper 2 lineage. Binds to regulatory regions of several acute-phase and cytokines genes and plays a role in the regulation of acute-phase reaction and inflammation. Plays also a role in intracellular bacteria killing.

**Gene ID:**

KCNMB4

**Uniprot**

Q86W47

**Synonyms:**

potassium large conductance calcium-activated channel, subfamily M, beta member 4

**Immunogen:**

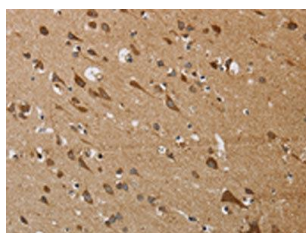
Synthetic peptide of human KCNMB4.

**Storage:**

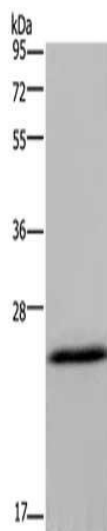
-20&deg; C, pH7.4 PBS, 0.05% NaN3, 40% Glycerol

## Product Images

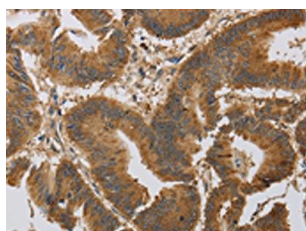
---



The image on the left is immunohistochemistry of paraffin-embedded Human brain tissue using PACO19892(KCNMB4 Antibody) at dilution 1/30, on the right is treated with synthetic peptide. (Original magnification: x—200).



Gel: 10%SDS-PAGE, Lysate: 40 &mu; g, Lane: Mouse brain tissue, Primary antibody: PACO19892(KCNMB4 Antibody) at dilution 1/500, Secondary antibody: Goat anti rabbit IgG at 1/8000 dilution, Exposure time: 20 seconds.



The image on the left is immunohistochemistry of paraffin-embedded Human colon cancer tissue using PACO19892(KCNMB4 Antibody) at dilution 1/30, on the right is treated with synthetic peptide. (Original magnification: x—200).