

## Product Information

**Size:**

50ul

**Reactivity:**

Human, Mouse

**Source:**

Rabbit

**Isotype:**

IgG

**Applications:**

ELISA, WB, IHC

**Recommended dilutions:**

ELISA:1:1000-1:2000, WB:1:200-1:1000,  
IHC:1:50-1:200

**Protein Background:**

Endonuclease that plays a critical role in PIWI-interacting RNA (piRNA) biogenesis during spermatogenesis. piRNAs provide essential protection against the activity of mobile genetic elements. piRNA-mediated transposon silencing is thus critical for maintaining genome stability, in particular in germline cells when transposons are mobilized as a consequence of wide-spread genomic demethylation. Has been proposed to act as a cardiolipin hydrolase to generate phosphatidic acid, at mitochondrial surface. Although it cannot be excluded that it can act as a phospholipase in some circumstances, it should be noted that cardiolipin hydrolase activity is either undetectable in vitro, or very low. In addition, cardiolipin is almost exclusively found on the inner mitochondrial membrane, while PLD6 localizes to the outer mitochondrial membrane, facing the cytosol.

**Gene ID:**

HAS1

**Uniprot**

Q92839

**Synonyms:**

hyaluronan synthase 1

**Immunogen:**

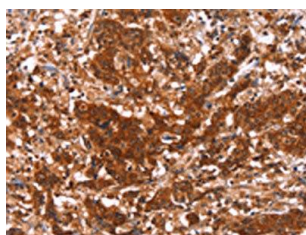
Synthetic peptide of human HAS1.

**Storage:**

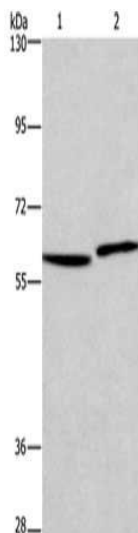
-20&deg; C, pH7.4 PBS, 0.05% NaN3, 40% Glycerol

## Product Images

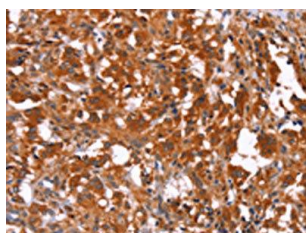
---



The image on the left is immunohistochemistry of paraffin-embedded Human gastric cancer tissue using PACO19748(HAS1 Antibody) at dilution 1/30, on the right is treated with synthetic peptide. (Original magnification: x—200).



Gel: 6%SDS-PAGE, Lysate: 40 &mu; g, Lane 1-2: Human testis tissue, Human prostate tissue, Primary antibody: PACO19748(HAS1 Antibody) at dilution 1/350, Secondary antibody: Goat anti rabbit IgG at 1/8000 dilution, Exposure time: 30 seconds.



The image on the left is immunohistochemistry of paraffin-embedded Human thyroid cancer tissue using PACO19748(HAS1 Antibody) at dilution 1/30, on the right is treated with synthetic peptide. (Original magnification: x—200).