

### Product Information

**Size:**

50ul

**Reactivity:**

Human, Mouse

**Source:**

Rabbit

**Isotype:**

IgG

**Applications:**

ELISA, WB, IHC

**Recommended dilutions:**

ELISA:1:1000-1:2000, WB:1:200-1:1000,  
IHC:1:50-1:200

**Protein Background:**

Self-ligand receptor of the signaling lymphocytic activation molecule (SLAM) family. SLAM receptors triggered by homo- or heterotypic cell-cell interactions are modulating the activation and differentiation of a wide variety of immune cells and thus are involved in the regulation and interconnection of both innate and adaptive immune response. Activities are controlled by presence or absence of small cytoplasmic adapter proteins, SH2D1A/SAP and/or SH2D1B/EAT-2. May participate in adhesion reactions between T lymphocytes and accessory cells by homophilic interaction. Promotes T-cell differentiation into a helper T-cell Th17 phenotype leading to increased IL-17 secretion; the costimulatory activity requires SH2D1A. Promotes recruitment of RORC to the IL-17 promoter. May be involved in the maintenance of peripheral cell tolerance by serving as a negative regulator of the immune response. May disable autoantibody responses and inhibit IFN-gamma secretion by CD4(+) T-cells.

**Gene ID:**

ERAS

**Uniprot**

Q7Z444

**Synonyms:**

ES cell expressed Ras

**Immunogen:**

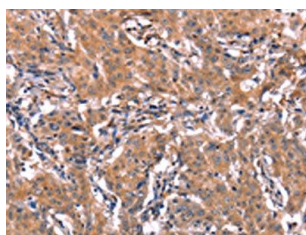
Synthetic peptide of human ERAS.

**Storage:**

-20°C; C, pH7.4 PBS, 0.05% NaN<sub>3</sub>, 40% Glycerol

## Product Images

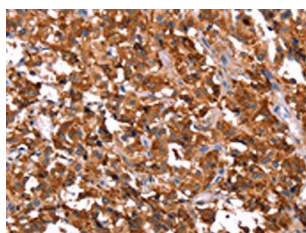
---



The image on the left is immunohistochemistry of paraffin-embedded Human gastric cancer tissue using PACO19614(ERAS Antibody) at dilution 1/40, on the right is treated with synthetic peptide. (Original magnification: x—200).



Gel: 10%SDS-PAGE, Lysate: 40 &mu; g, Lane: Mouse heart tissue, Primary antibody: PACO19614(ERAS Antibody) at dilution 1/450, Secondary antibody: Goat anti rabbit IgG at 1/8000 dilution, Exposure time: 1 minute.



The image on the left is immunohistochemistry of paraffin-embedded Human thyroid cancer tissue using PACO19614(ERAS Antibody) at dilution 1/40, on the right is treated with synthetic peptide. (Original magnification: x—200).