

## Product Information

**Size:**

50ul

**Reactivity:**

Human

**Source:**

Rabbit

**Isotype:**

IgG

**Applications:**

ELISA, WB, IHC

**Recommended dilutions:**

ELISA:1:2000-1:5000, WB:1:500-1:2000,  
IHC:1:25-1:100

**Protein Background:**

Component of TFIID, the TATA-binding protein-free TAF complex (TFTC), the PCAF complex and the STAGA transcription coactivator-HAT complex. The PCAF complex consists at least of TADA2L/ADA2, SUPT3H/SPT3, TADA3L/ADA3, TAF5L/PAF65-beta, TAF6L/PAF65-alpha, TAF10/TAFII30, TAF12/TAFII20, TAF9/TAFII31 and TRRAP. The STAGA transcription coactivator-HAT complex consists at least of SUPT3H, GCN5L2, SUPT7L, TAF5L, TAF6L, TADA3L, TAD1L, TAF10, TAF12, TRRAP and TAF9. Binds N-terminal domain of p53/TP53 which is essential for transcription. Component of some MLL1/MLL complex, at least composed of the core components KMT2A/MLL1, ASH2L, HCFC1/HCF1, WDR5 and RBBP5, as well as the facultative components BAP18, CHD8, E2F6, HSP70, INO80C, KANSL1, LAS1L, MAX, MCRC1, MGA, MYST1/MOF, PELP1, PHF20, PRP31, RING2, RUVB1/TIP49A, RUVB2/TIP49B, SENP3, TAF1, TAF4, TAF6, TAF7, TAF9 and TEX10. Binds TFIIB and the Herpes simplex virus activator VP16. Forms a heterodimer with TAF6/TAFII80 in a complex with the TAF4B/TAFII105-TAF12/TAFII20 heterodimer.

**Gene ID:**

EIF4G1

**Uniprot**

Q04637

**Synonyms:**

eukaryotic translation initiation factor 4 gamma, 1

**Immunogen:**

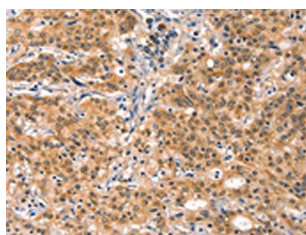
Synthetic peptide of human EIF4G1.

**Storage:**

-20&deg; C, pH7.4 PBS, 0.05% NaN3, 40% Glycerol

## Product Images

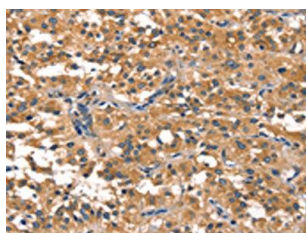
---



The image on the left is immunohistochemistry of paraffin-embedded Human gastric cancer tissue using PACO19593(EIF4G1 Antibody) at dilution 1/30, on the right is treated with synthetic peptide. (Original magnification: x—200).



Gel: 6%SDS-PAGE, Lysate: 40 &mu; g, Lane 1-2: Lovo cells, 293T cells, Primary antibody: PACO19593(EIF4G1 Antibody) at dilution 1/450, Secondary antibody: Goat anti rabbit IgG at 1/8000 dilution, Exposure time: 1 minute.



The image on the left is immunohistochemistry of paraffin-embedded Human thyroid cancer tissue using PACO19593(EIF4G1 Antibody) at dilution 1/30, on the right is treated with synthetic peptide. (Original magnification: x—200).