

Product Information

Size:

50ul

Reactivity:

Human

Source:

Rabbit

Isotype:

IgG

Applications:

ELISA, WB, IHC

Recommended dilutions:

ELISA:1:2000-1:5000, WB:1:500-1:2000,
IHC:1:25-1:100

Protein Background:

Mediates homophilic cell-cell adhesion in a Ca²⁺-independent manner. Also mediates heterophilic cell-cell adhesion with CADM3 and PVRL3 in a Ca²⁺-independent manner. Acts as a tumor suppressor in non-small-cell lung cancer (NSCLC) cells. Interaction with CRTAM promotes natural killer (NK) cell cytotoxicity and interferon-gamma (IFN-gamma) secretion by CD8⁺ cells in vitro as well as NK cell-mediated rejection of tumors expressing CADM3 in vivo. May contribute to the less invasive phenotypes of lepidic growth tumor cells. In mast cells, may mediate attachment to and promote communication with nerves. CADM1, together with MITF, is essential for development and survival of mast cells in vivo. Acts as a synaptic cell adhesion molecule and plays a role in the formation of dendritic spines and in synapse assembly. May be involved in neuronal migration, axon growth, pathfinding, and fasciculation on the axons of differentiating neurons.

Gene ID:

CHRDL2

Uniprot

Q6WN34

Synonyms:

chordin-like 2

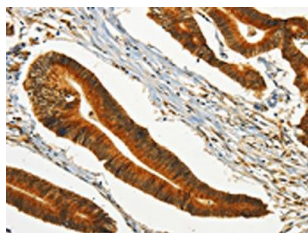
Immunogen:

Synthetic peptide of human CHRDL2.

Storage:

-20°C; C, pH7.4 PBS, 0.05% NaN₃, 40% Glycerol

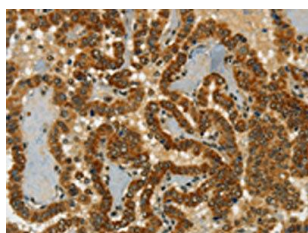
Product Images



The image on the left is immunohistochemistry of paraffin-embedded Human colon cancer tissue using PACO19469(CHRDL2 Antibody) at dilution 1/20, on the right is treated with synthetic peptide. (Original magnification: x—200).



Gel: 8%SDS-PAGE, Lysate: 40 μ g, Lane: Human fetal brain tissue, Primary antibody: PACO19469(CHRDL2 Antibody) at dilution 1/600, Secondary antibody: Goat anti rabbit IgG at 1/8000 dilution, Exposure time: 1 minute.



The image on the left is immunohistochemistry of paraffin-embedded Human thyroid cancer tissue using PACO19469(CHRDL2 Antibody) at dilution 1/20, on the right is treated with synthetic peptide. (Original magnification: x—200).