

Product Information

Size:

50ul

Reactivity:

Human

Source:

Rabbit

Isotype:

IgG

Applications:

ELISA, WB, IHC

Recommended dilutions:

ELISA:1:2000-1:10000, WB:1:1000-1:5000,
IHC:1:50-1:200

Protein Background:

Non-catalytic component of the RNA exosome complex which has 3'->5' exoribonuclease activity and participates in a multitude of cellular RNA processing and degradation events. In the nucleus, the RNA exosome complex is involved in proper maturation of stable RNA species such as rRNA, snRNA and snoRNA, in the elimination of RNA processing by-products and non-coding 'pervasive' transcripts, such as antisense RNA species and promoter-upstream transcripts (PROMPTs), and of mRNAs with processing defects, thereby limiting or excluding their export to the cytoplasm. The RNA exosome may be involved in Ig class switch recombination (CSR) and/or Ig variable region somatic hypermutation (SHM) by targeting AICDA deamination activity to transcribed dsDNA substrates. In the cytoplasm, the RNA exosome complex is involved in general mRNA turnover and specifically degrades inherently unstable mRNAs containing AU-rich elements (AREs) within their 3' untranslated regions, and in RNA surveillance pathways, preventing translation of aberrant mRNAs.

Gene ID:

CCR6

Uniprot

P51684

Synonyms:

chemokine (C-C motif) receptor 6

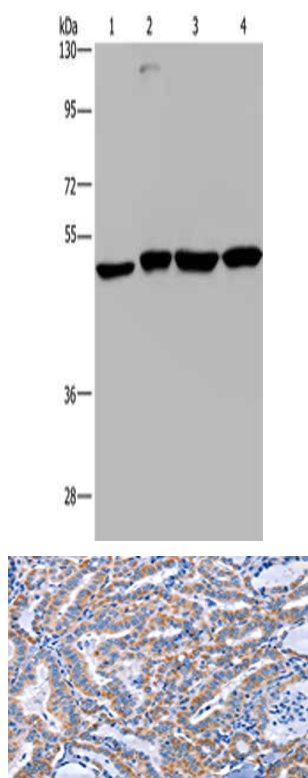
Immunogen:

Synthetic peptide of human CCR6.

Storage:

-20° C, pH7.4 PBS, 0.05% NaN3, 40% Glycerol

Product Images



Gel: 8%SDS-PAGE, Lysate: 40 μ g, Lane 1-4: A431 cells, HepG2 cells, Raji cells, K562 cells, Primary antibody: PACO19405(CCR6 Antibody) at dilution 1/966, Secondary antibody: Goat anti rabbit IgG at 1/8000 dilution, Exposure time: 1 minute.

The image on the left is immunohistochemistry of paraffin-embedded Human thyroid cancer tissue using PACO19405(CCR6 Antibody) at dilution 1/50, on the right is treated with synthetic peptide. (Original magnification: x—200).