

Product Information

Size:

50ul

Reactivity:

Human, Mouse

Source:

Rabbit

Isotype:

IgG

Applications:

ELISA, WB, IHC

Recommended dilutions:

ELISA:1:2000-1:5000, WB:1:500-1:2000,
IHC:1:50-1:200

Protein Background:

Transcription factor playing an important role in primary neurulation and in epithelial development. Binds directly to the consensus DNA sequence 5'-AACCGGT-3' acting as an activator and repressor on distinct target genes. During embryogenesis, plays unique and cooperative roles with GRHL3 in establishing distinct zones of primary neurulation. Essential for closure 3 (rostral end of the forebrain), functions cooperatively with GRHL3 in closure 2 (forebrain/midbrain boundary) and posterior neuropore closure. Regulates epithelial morphogenesis acting as a target gene-associated transcriptional activator of apical junctional complex components. Up-regulates of CLDN3 and CLDN4, as well as of RAB25, which increases the CLDN4 protein and its localization at tight junctions. Comprises an essential component of the transcriptional machinery that establishes appropriate expression levels of CLDN4 and CDH1 in different types of epithelia. Exhibits functional redundancy with GRHL3 in epidermal morphogenetic events and epidermal wound repair.

Gene ID:

BCAS4

Uniprot

Q8TDM0

Synonyms:

breast carcinoma amplified sequence 4

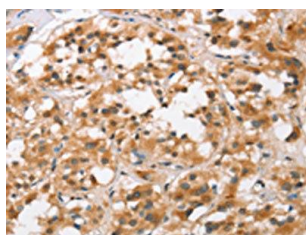
Immunogen:

Synthetic peptide of human BCAS4.

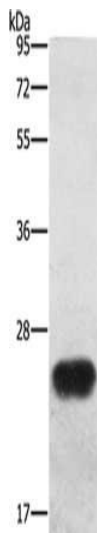
Storage:

-20° C, pH7.4 PBS, 0.05% NaN3, 40% Glycerol

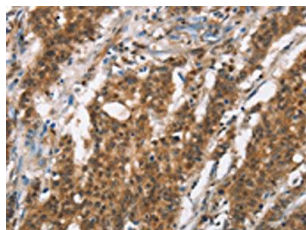
Product Images



The image on the left is immunohistochemistry of paraffin-embedded Human thyroid cancer tissue using PACO19346(BCAS4 Antibody) at dilution 1/50, on the right is treated with synthetic peptide. (Original magnification: x—200).



Gel: 10%SDS-PAGE, Lysate: 40 μ g, Lane: Mouse spleen tissue, Primary antibody: PACO19346(BCAS4 Antibody) at dilution 1/1200, Secondary antibody: Goat anti rabbit IgG at 1/8000 dilution, Exposure time: 1 second.



The image on the left is immunohistochemistry of paraffin-embedded Human gastric cancer tissue using PACO19346(BCAS4 Antibody) at dilution 1/50, on the right is treated with synthetic peptide. (Original magnification: x—200).