

### Product Information

**Size:**

50ul

**Reactivity:**

Human, Mouse

**Source:**

Rabbit

**Isotype:**

IgG

**Applications:**

ELISA, WB, IHC

**Recommended dilutions:**

ELISA:1:2000-1:5000, WB:1:500-1:2000,  
IHC:1:15-1:50

**Protein Background:**

Negative regulator of hematopoietic progenitor cell proliferation, survival and migration. Critical regulator of thymocyte development and T-cell antigen receptor (TCR) signaling by mediating recruitment and activation of ZAP70. Required for phosphorylation of CD3Z, membrane translocation of ZAP70 and subsequent activation of the ZAP70-mediated pathways. Essential for efficient beta-selection and positive selection by promoting the ZAP70-dependent phosphorylation of the LAT signalosome during pre-TCR and TCR signaling. Crucial for thymocyte maturation during DN3 to DN4 transition and during positive selection. Plays critical roles in mast cell function by facilitating phosphorylation of SYK in Fc epsilon RI-mediated signal transduction. Essential for the phosphorylation of LAT, LCP2, PLCG1 and PLCG2 and for Ca(2+) mobilization in mast cells. Binds GTP but lacks intrinsic GTPase activity and is resistant to Rho-specific GTPase-activating proteins.

**Gene ID:**

MAPT

**Uniprot**

P10636

**Synonyms:**

microtubule-associated protein tau

**Immunogen:**

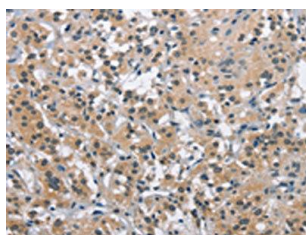
Synthetic peptide of human MAPT.

**Storage:**

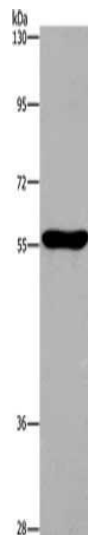
-20&deg; C, pH7.4 PBS, 0.05% NaN3, 40% Glycerol

## Product Images

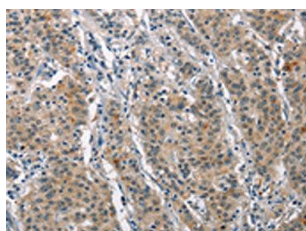
---



The image on the left is immunohistochemistry of paraffin-embedded Human thyroid cancer tissue using PACO19301(MAPT Antibody) at dilution 1/25, on the right is treated with synthetic peptide. (Original magnification: x—200).



Gel: 6%SDS-PAGE, Lysate: 40 &mu; g, Lane: NIH/3T3 cells, Primary antibody: PACO19301(MAPT Antibody) at dilution 1/550, Secondary antibody: Goat anti rabbit IgG at 1/8000 dilution, Exposure time: 5 minutes.



The image on the left is immunohistochemistry of paraffin-embedded Human gastric cancer tissue using PACO19301(MAPT Antibody) at dilution 1/25, on the right is treated with synthetic peptide. (Original magnification: x—200).