

PACO19232

---

## Product Information

**Size:**

50ul

**Reactivity:**

Human, Mouse

**Source:**

Rabbit

**Isotype:**

IgG

**Applications:**

ELISA, WB, IHC

**Recommended dilutions:**

ELISA:1:2000-1:10000, WB:1:1000-1:5000,  
IHC:1:25-1:100

**Protein Background:**

Multifunctional enzyme that converts the viral RNA genome into dsDNA in viral cytoplasmic capsids. This enzyme displays a DNA polymerase activity that can copy either DNA or RNA templates, and a ribonuclease H (RNase H) activity that cleaves the RNA strand of RNA-DNA heteroduplexes in a partially processive 3'- to 5'- endonucleasic mode. Neo-synthesized pregenomic RNA (pgRNA) are encapsidated together with the P protein, and reverse-transcribed inside the nucleocapsid. Initiation of reverse-transcription occurs first by binding the epsilon loop on the pgRNA genome, and is initiated by protein priming, thereby the 5'-end of (-)DNA is covalently linked to P protein. Partial (+)DNA is synthesized from the (-)DNA template and generates the relaxed circular DNA (RC-DNA) genome. After budding and infection, the RC-DNA migrates in the nucleus, and is converted into a plasmid-like covalently closed circular DNA (cccDNA).

**Gene ID:**

SPR

**Uniprot**

P35270

**Synonyms:**

sepiapterin reductase (7,8-dihydrobiopterin: NADP+ oxidoreductase)

**Immunogen:**

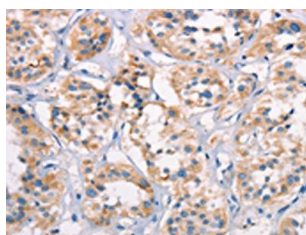
Synthetic peptide of human SPR.

**Storage:**

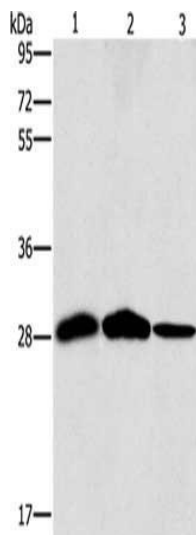
-20&deg; C, pH7.4 PBS, 0.05% NaN<sub>3</sub>, 40% Glycerol

## Product Images

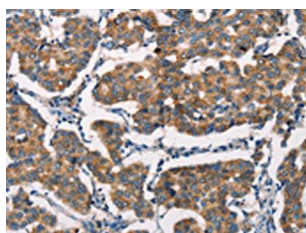
---



The image on the left is immunohistochemistry of paraffin-embedded Human thyroid cancer tissue using PACO19232(SPR Antibody) at dilution 1/20, on the right is treated with synthetic peptide. (Original magnification: x—200).



Gel: 10%SDS-PAGE, Lysate: 40 &mu; g, Lane 1-3: Mouse liver tissue, human chromaffin cell tumor tissue, hepG2 cells, Primary antibody: PACO19232(SPR Antibody) at dilution 1/1500, Secondary antibody: Goat anti rabbit IgG at 1/8000 dilution, Exposure time: 10 seconds.



The image on the left is immunohistochemistry of paraffin-embedded Human breast cancer tissue using PACO19232(SPR Antibody) at dilution 1/20, on the right is treated with synthetic peptide. (Original magnification: x—200).