

---

### Product Information

**Size:**

50ul

**Reactivity:**

Human, Mouse, Rat

**Source:**

Rabbit

**Isotype:**

IgG

**Applications:**

ELISA, WB, IHC

**Recommended dilutions:**

ELISA:1:2000-1:5000, WB:1:200-1:1000,  
IHC:1:50-1:100

**Protein Background:**

Binds peptides derived from antigens that access the endocytic route of antigen presenting cells (APC) and presents them on the cell surface for recognition by the CD4 T-cells. The peptide binding cleft accommodates peptides of 10-30 residues. The peptides presented by MHC class II molecules are generated mostly by degradation of proteins that access the endocytic route, where they are processed by lysosomal proteases and other hydrolases. Exogenous antigens that have been endocytosed by the APC are thus readily available for presentation via MHC II molecules, and for this reason this antigen presentation pathway is usually referred to as exogenous. As membrane proteins on their way to degradation in lysosomes as part of their normal turn-over are also contained in the endosomal/lysosomal compartments, exogenous antigens must compete with those derived from endogenous components. Autophagy is also a source of endogenous peptides, autophagosomes constitutively fuse with MHC class II loading compartments.

**Gene ID:**

PIK3R2

**Uniprot**

O00459

**Synonyms:**

phosphoinositide-3-kinase, regulatory subunit 2 (beta)

**Immunogen:**

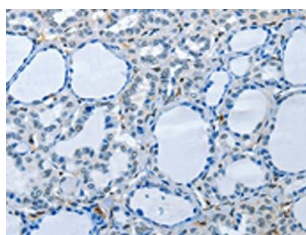
Synthetic peptide of human PIK3R2.

**Storage:**

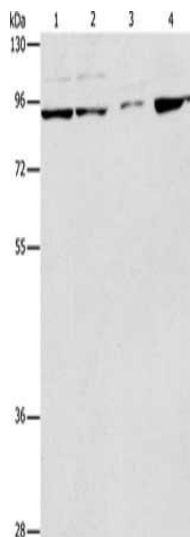
-20&deg; C, pH7.4 PBS, 0.05% NaN3, 40% Glycerol

## Product Images

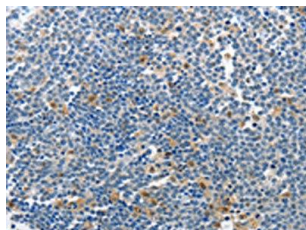
---



The image on the left is immunohistochemistry of paraffin-embedded Human thyroid cancer tissue using PACO19197(PIK3R2 Antibody) at dilution 1/70, on the right is treated with synthetic peptide. (Original magnification: x—200).



Gel: 8%SDS-PAGE, Lysate: 40 &mu; g, Lane 1-4: Raji cells, A549 cells, A431 cells, K562 cells, Primary antibody: PACO19197(PIK3R2 Antibody) at dilution 1/233, Secondary antibody: Goat anti rabbit IgG at 1/8000 dilution, Exposure time: 2 minutes.



The image on the left is immunohistochemistry of paraffin-embedded Human lymphoma tissue using PACO19197(PIK3R2 Antibody) at dilution 1/70, on the right is treated with synthetic peptide. (Original magnification: x—200).