

Product Information

Size:

50ul

Reactivity:

Human

Source:

Rabbit

Isotype:

IgG

Applications:

ELISA, WB, IHC

Recommended dilutions:

ELISA:1:2000-1:10000, WB:1:1000-1:5000,
IHC:1:50-1:200

Protein Background:

Non-receptor protein-tyrosine kinase that plays an essential role in regulating cell migration, adhesion, spreading, reorganization of the actin cytoskeleton, formation and disassembly of focal adhesions and cell protrusions, cell cycle progression, cell proliferation and apoptosis. Required for early embryonic development, embryonic angiogenesis, normal cardiomyocyte migration and proliferation, and normal heart development. Regulates axon growth and neuronal cell migration, axon branching and synapse formation; required for normal development of the nervous system. Plays a role in osteogenesis and differentiation of osteoblasts. Functions in integrin signal transduction, but also in signaling downstream of numerous growth factor receptors, G-protein coupled receptors (GPCR), ephrin receptors, netrin receptors and LDL receptors.

Gene ID:

ART4

Uniprot

Q93070

Synonyms:

ADP-ribosyltransferase 4

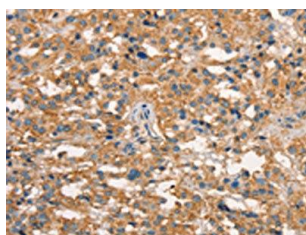
Immunogen:

Synthetic peptide of human ART4.

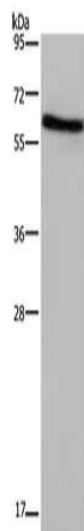
Storage:

-20° C, pH7.4 PBS, 0.05% NaN₃, 40% Glycerol

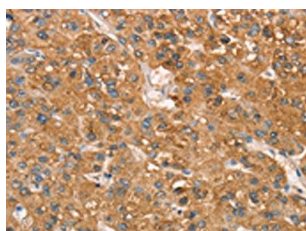
Product Images



The image on the left is immunohistochemistry of paraffin-embedded Human thyroid cancer tissue using PACO19156(ART4 Antibody) at dilution 1/50, on the right is treated with synthetic peptide. (Original magnification: x—200).



Gel: 10%SDS-PAGE, Lysate: 40 μ g, Lane: Human placenta tissue, Primary antibody: PACO19156(ART4 Antibody) at dilution 1/1000, Secondary antibody: Goat anti rabbit IgG at 1/8000 dilution, Exposure time: 2 minutes.



The image on the left is immunohistochemistry of paraffin-embedded Human liver cancer tissue using PACO19156(ART4 Antibody) at dilution 1/50, on the right is treated with synthetic peptide. (Original magnification: x—200).