

Product Information

Size:

50ul

Reactivity:

Human, Mouse, Rat

Source:

Rabbit

Isotype:

IgG

Applications:

ELISA, WB

Recommended dilutions:

ELISA:1:1000-1:2000, WB:1:200-1:1000

Protein Background:

Receptor tyrosine kinase which binds promiscuously transmembrane ephrin-B family ligands residing on adjacent cells, leading to contact-dependent bidirectional signaling into neighboring cells. The signaling pathway downstream of the receptor is referred to as forward signaling while the signaling pathway downstream of the ephrin ligand is referred to as reverse signaling. Cognate/functional ephrin ligands for this receptor include EFNB1, EFNB2 and EFNB3. During nervous system development, regulates retinal axon guidance redirecting ipsilaterally ventrotemporal retinal ganglion cells axons at the optic chiasm midline. This probably requires repulsive interaction with EFNB2. In the adult nervous system together with EFNB3, regulates chemotaxis, proliferation and polarity of the hippocampus neural progenitors. Beside its role in axon guidance plays also an important redundant role with other ephrin-B receptors in development and maturation of dendritic spines and synapse formation. May also regulate angiogenesis.

Gene ID:

ORAI1

Uniprot

Q96D31

Synonyms:

ORAI calcium release-activated calcium modulator 1

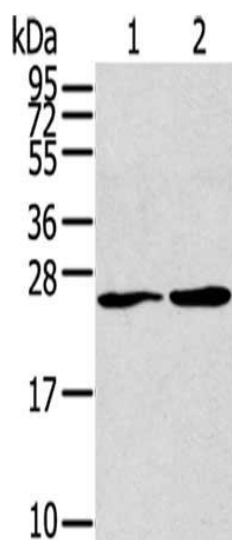
Immunogen:

Synthetic peptide of human ORAI1(L1).

Storage:

-20° C, pH7.4 PBS, 0.05% NaN3, 40% Glycerol

Product Images



Gel: 12%SDS-PAGE, Lysate: 40 μ g, Lane 1-2: Jurkat cells, PC3 cells, Primary antibody: PACO18621(ORAI1), Secondary antibody: Goat anti rabbit IgG at 1/8000 dilution, Exposure time: 10 minutes.