

# AKR1A1 Antibody



PACO18540

---

## Product Information

**Size:**

50ul

**Reactivity:**

Human, Mouse, Rat

**Source:**

Rabbit

**Isotype:**

IgG

**Applications:**

ELISA, WB, IHC

**Recommended dilutions:**

ELISA:1:2000-1:5000, WB:1:500-1:2000,  
IHC:1:25-1:100

**Protein Background:**

Transcription activator which binds specifically to the MEF2 element present in the regulatory regions of many muscle-specific genes. Controls cardiac morphogenesis and myogenesis, and is also involved in vascular development. Plays an essential role in hippocampal-dependent learning and memory by suppressing the number of excitatory synapses and thus regulating basal and evoked synaptic transmission. Crucial for normal neuronal development, distribution, and electrical activity in the neocortex. Necessary for proper development of megakaryocytes and platelets and for bone marrow B-lymphopoiesis. Required for B-cell survival and proliferation in response to BCR stimulation, efficient IgG1 antibody responses to T-cell-dependent antigens and for normal induction of germinal center B-cells. May also be involved in neurogenesis and in the development of cortical architecture. By similarity. Isoform 3 and isoform 4, which lack the repressor domain, are more active than isoform 1 and isoform 2. McDermott J. C. , Mol. Cell. Biol.

**Gene ID:**

AKR1A1

**Uniprot**

P14550

**Synonyms:**

Aldo-keto reductase family 1, member A1 (aldehyde reductase)

**Immunogen:**

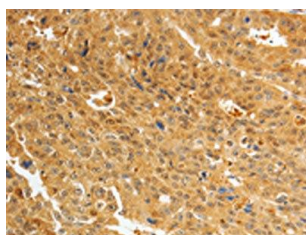
Synthetic peptide of human AKR1A1.

**Storage:**

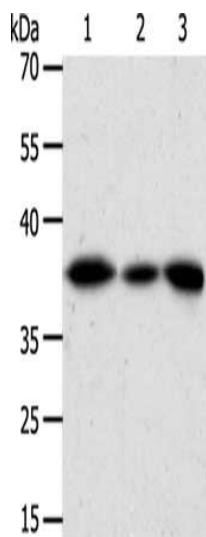
-20&deg; C, pH7.4 PBS, 0.05% NaN<sub>3</sub>, 40% Glycerol

## Product Images

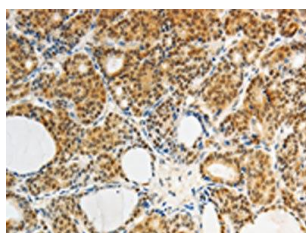
---



The image on the left is immunohistochemistry of paraffin-embedded Human ovarian cancer tissue using PACO18540(AKR1A1 Antibody) at dilution 1/25, on the right is treated with synthetic peptide. (Original magnification: x—200).



Gel: 10%SDS-PAGE, Lysate: 27 &mu; g, Lane 1-3: Human liver cancer tissue, hela cells, human fetal kidney tissue, Primary antibody: PACO18540(AKR1A1 Antibody) at dilution 1/450, Secondary antibody: Goat anti rabbit IgG at 1/8000 dilution, Exposure time: 10 seconds.



The image on the left is immunohistochemistry of paraffin-embedded Human thyroid cancer tissue using PACO18540(AKR1A1 Antibody) at dilution 1/25, on the right is treated with synthetic peptide. (Original magnification: x—200).