

PACO18440

---

## Product Information

**Size:**

50ul

**Reactivity:**

Human, Mouse, Rat

**Source:**

Rabbit

**Isotype:**

IgG

**Applications:**

ELISA, WB, IHC

**Recommended dilutions:**

ELISA:1:1000-1:5000, WB:1:200-1:1000,  
IHC:1:50-1:200

**Protein Background:**

The Von Hippel-Lindau (VHL) protein is a substrate recognition component of an E3 ubiquitin ligase complex containing elongin BC (TCEB1 and TCEB2), cullin 1 (CUL1), and RING-box protein 1 (RBX1). VHL protein has been shown to exist as three distinct isoforms resulting from alternatively spliced transcript variants. Loss of VHL protein function results in a dominantly inherited familial cancer syndrome that manifests as angiomas of the retina, hemangioblastomas of the central nervous system, renal clear-cell carcinomas and pheochromocytomas. Under normoxic conditions, VHL directs the ubiquitylation and subsequent proteosomal degradation of the hypoxia inducible factor HIF alpha, maintaining very low levels of HIF alpha in the cell. Cellular exposure to hypoxic conditions, or loss of VHL protein function, results in increased HIF alpha protein levels and increased expression of HIF-induced gene products, many of which are angiogenesis factors such as vascular endothelial growth factor (VEGF).

**Gene ID:**

Map2

**Uniprot**

P20357

**Synonyms:**

microtubule-associated protein 2

**Immunogen:**

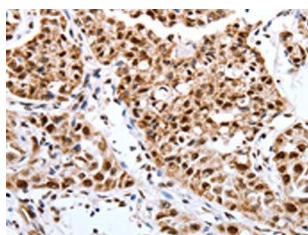
Synthetic peptide of mouse Map2.

**Storage:**

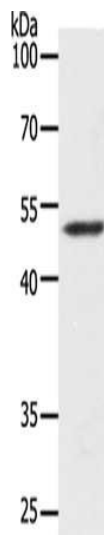
-20&deg; C, pH7.4 PBS, 0.05% NaN<sub>3</sub>, 40% Glycerol

## Product Images

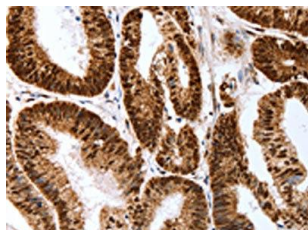
---



The image on the left is immunohistochemistry of paraffin-embedded Human lung cancer tissue using PACO18440(Map2 Antibody) at dilution 1/40, on the right is treated with synthetic peptide. (Original magnification: x—200).



Gel: 8+10+12%SDS-PAGE, Lysate: 50 &mu; g, Lane: Human lymphoma tissue, Primary antibody: PACO18440(Map2 Antibody) at dilution 1/400, Secondary antibody: Goat anti rabbit IgG at 1/8000 dilution, Exposure time: 90 seconds.



The image on the left is immunohistochemistry of paraffin-embedded Human colon cancer tissue using PACO18440(Map2 Antibody) at dilution 1/40, on the right is treated with synthetic peptide. (Original magnification: x—200).