

Product Information

Size:

50ul

Reactivity:

Human, Mouse, Rat

Source:

Rabbit

Isotype:

IgG

Applications:

ELISA, WB

Recommended dilutions:

ELISA:1:2000-1:5000, WB:1:500-1:2000

Protein Background:

TNF- alpha , the prototypical member of the TNF protein superfamily, is a homotrimeric type-II membrane protein. Membrane-bound TNF- alpha is cleaved by the metalloprotease TACE/ADAM17 to generate a soluble homotrimer. Both membrane and soluble forms of TNF- alpha are biologically active. TNF- alpha is produced by a variety of immune cells including T cells, B cells, NK cells, and macrophages. Cellular response to TNF- alpha is mediated through interaction with receptors TNF-R1 and TNF-R2 and results in activation of pathways that favor both cell survival and apoptosis depending on the cell type and biological context. Activation of kinase pathways (including JNK, Erk (p44/42), p38 MAPK, and NF- κ B) promotes the survival of cells, while TNF- alpha -mediated activation of caspase-8 leads to programmed cell death. TNF- alpha plays a key regulatory role in inflammation and host defense against bacterial infection, notably Mycobacterium tuberculosis.

Gene ID:

SYT2

Uniprot

Q8N9I0

Synonyms:

synaptotagmin II

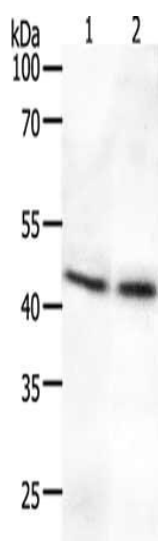
Immunogen:

Synthetic peptide of human SYT2.

Storage:

-20° C, pH7.4 PBS, 0.05% NaN3, 40% Glycerol

Product Images



Gel: 10%SDS-PAGE, Lysate: 50 μ g, Lane 1-2: Human fetal brain tissue, Human lung tissue, Primary antibody: PACO18437(SYT2 Antibody) at dilution 1/700, Secondary antibody: Goat anti rabbit IgG at 1/8000 dilution, Exposure time: 40 seconds.