

PECAM1 Antibody



PACO18371

Product Information

Size:

50ul

Reactivity:

Human, Mouse

Source:

Rabbit

Isotype:

IgG

Applications:

ELISA, IHC

Recommended dilutions:

ELISA:1:2000-1:10000, IHC:1:50-1:200

Protein Background:

The protein encoded by this gene is found on the surface of platelets, monocytes, neutrophils, and some types of T-cells, and makes up a large portion of endothelial cell intercellular junctions. The encoded protein is a member of the immunoglobulin superfamily and is likely involved in leukocyte migration, angiogenesis, and integrin activation.

Gene ID:

PECAM1

Uniprot

P16284

Synonyms:

Platelet/endothelial cell adhesion molecule 1

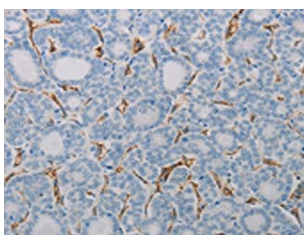
Immunogen:

Synthetic peptide of human PECAM1.

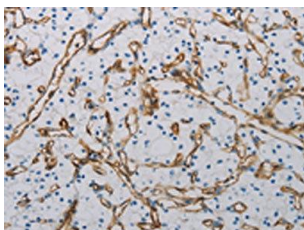
Storage:

-20° C, pH7.4 PBS, 0.05% NaN3, 40% Glycerol

Product Images



The image on the left is immunohistochemistry of paraffin-embedded Human thyroid cancer tissue using PACO18371(PECAM1 Antibody) at dilution 1/40, on the right is treated with synthetic peptide. (Original magnification: x—200).



The image on the left is immunohistochemistry of paraffin-embedded Human renal cancer tissue using PACO18371(PECAM1 Antibody) at dilution 1/40, on the right is treated with synthetic peptide. (Original magnification: x—200).