

# PKD2L1 Antibody



PACO18349

---

## Product Information

**Size:**

50ul

**Reactivity:**

Human

**Source:**

Rabbit

**Isotype:**

IgG

**Applications:**

ELISA, IHC

**Recommended dilutions:**

ELISA:1:2000-1:5000, IHC:1:20-1:100

**Protein Background:**

This gene encodes a member of the polycystin protein family. The encoded protein contains multiple transmembrane domains, and cytoplasmic N- and C-termini. The protein may be an integral membrane protein involved in cell-cell/matrix interactions. This protein functions as a calcium-regulated nonselective cation channel. Two transcript variants encoding different isoforms have been found for this gene.

**Gene ID:**

PKD2L1

**Uniprot**

Q9P0L9

**Synonyms:**

polycystic kidney disease 2-like 1

**Immunogen:**

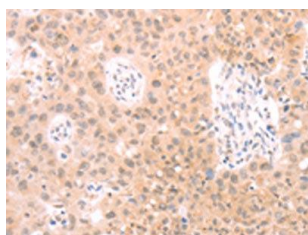
Synthetic peptide of human PKD2L1.

**Storage:**

-20&deg; C, pH7.4 PBS, 0.05% NaN<sub>3</sub>, 40% Glycerol

## Product Images

---



The image on the left is immunohistochemistry of paraffin-embedded Human lung cancer tissue using PACO18349(PKD2L1 Antibody) at dilution 1/25, on the right is treated with synthetic peptide. (Original magnification: x—200).