

PKD2L1 Antibody



PACO18348

Product Information

Size:

50ul

Reactivity:

Human

Source:

Rabbit

Isotype:

IgG

Applications:

ELISA, IHC

Recommended dilutions:

ELISA:1:2000-1:5000, IHC:1:25-1:100

Protein Background:

This gene encodes a member of the polycystin protein family. The encoded protein contains multiple transmembrane domains, and cytoplasmic N- and C-termini. The protein may be an integral membrane protein involved in cell-cell/matrix interactions. This protein functions as a calcium-regulated nonselective cation channel. Two transcript variants encoding different isoforms have been found for this gene.

Gene ID:

PKD2L1

Uniprot

Q9P0L9

Synonyms:

polycystic kidney disease 2-like 1

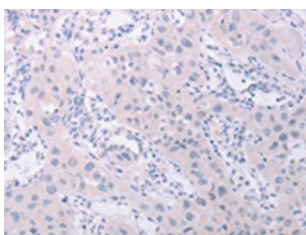
Immunogen:

Synthetic peptide of human PKD2L1.

Storage:

-20° C, pH7.4 PBS, 0.05% NaN₃, 40% Glycerol

Product Images



The image on the left is immunohistochemistry of paraffin-embedded Human lung cancer tissue using PACO18348(PKD2L1 Antibody) at dilution 1/40, on the right is treated with synthetic peptide. (Original magnification: x—200).