

# PECAM1 Antibody



PACO18342

---

## Product Information

**Size:**

50ul

**Reactivity:**

Human, Mouse

**Source:**

Rabbit

**Isotype:**

IgG

**Applications:**

ELISA, WB, IHC

**Recommended dilutions:**

ELISA:1:1000-1:5000, WB:1:500-1:2000,  
IHC:1:25-1:100

**Protein Background:**

The protein encoded by this gene is found on the surface of platelets, monocytes, neutrophils, and some types of T-cells, and makes up a large portion of endothelial cell intercellular junctions. The encoded protein is a member of the immunoglobulin superfamily and is likely involved in leukocyte migration, angiogenesis, and integrin activation.

**Gene ID:**

PECAM1

**Uniprot**

P16284

**Synonyms:**

Platelet/endothelial cell adhesion molecule 1

**Immunogen:**

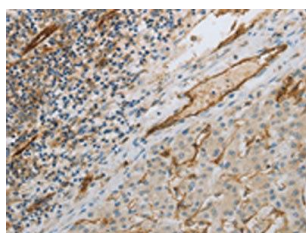
Synthetic peptide of human PECAM1.

**Storage:**

-20&deg; C, pH7.4 PBS, 0.05% NaN3, 40% Glycerol

## Product Images

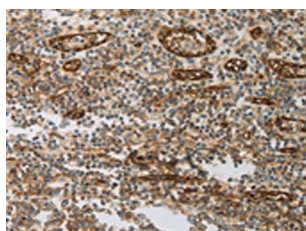
---



The image on the left is immunohistochemistry of paraffin-embedded Human liver cancer tissue using PACO18342(PECAM1 Antibody) at dilution 1/30, on the right is treated with synthetic peptide. (Original magnification: x—200).



Gel: 8%SDS-PAGE, Lysate: 60 &mu; g, Lane: Jurkat cells, Primary antibody: PACO18342(PECAM1 Antibody) at dilution 1/500, Secondary antibody: Goat anti rabbit IgG at 1/8000 dilution, Exposure time: 5 minutes.



The image on the left is immunohistochemistry of paraffin-embedded Human tonsil tissue using PACO18342(PECAM1 Antibody) at dilution 1/30, on the right is treated with synthetic peptide. (Original magnification: x—200).