

Product Information

Size:

50ul

Reactivity:

Human, Mouse, Rat

Source:

Rabbit

Isotype:

IgG

Applications:

ELISA, IHC

Recommended dilutions:

ELISA:1:1000-1:2000, IHC:1:25-1:100

Protein Background:

This gene is a member of the paired box (PAX) family of transcription factors. Members of this gene family typically contain a paired box domain, an octapeptide, and a paired-type homeodomain. These genes play critical roles during fetal development and cancer growth. The specific function of the paired box 9 gene is unknown but it may involve development of stratified squamous epithelia as well as various organs and skeletal elements.

Gene ID:

PAX9

Uniprot

P55771

Synonyms:

paired box 9

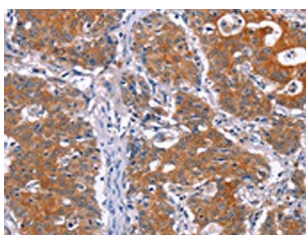
Immunogen:

Synthetic peptide of human PAX9.

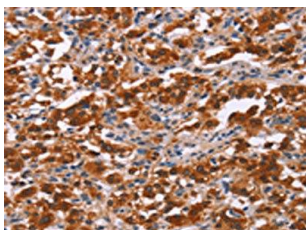
Storage:

-20° C, pH7.4 PBS, 0.05% NaN₃, 40% Glycerol

Product Images



The image on the left is immunohistochemistry of paraffin-embedded Human gastric cancer tissue using PACO18341(PAX9 Antibody) at dilution 1/25, on the right is treated with synthetic peptide. (Original magnification: x—200).



The image on the left is immunohistochemistry of paraffin-embedded Human thyroid cancer tissue using PACO18341(PAX9 Antibody) at dilution 1/25, on the right is treated with synthetic peptide. (Original magnification: x—200).