

# PPAP2A Antibody



PACO18328

---

## Product Information

**Size:**

50ul

**Reactivity:**

Human, Mouse, Rat

**Source:**

Rabbit

**Isotype:**

IgG

**Applications:**

ELISA, IHC

**Recommended dilutions:**

ELISA:1:2000-1:5000, IHC:1:50-1:200

**Protein Background:**

The protein encoded by this gene is a member of the phosphatidic acid, phosphatase (PAP) family. PAPs convert phosphatidic acid, to diacylglycerol, and function in de novo synthesis of glycerolipids as well as in receptor-activated signal transduction mediated by phospholipase D. This protein is an integral membrane glycoprotein, and has been shown to be a surface enzyme that plays an active role in the hydrolysis and uptake of lipids from extracellular space. The expression of this gene is found to be regulated by androgen in a prostatic adenocarcinoma cell line. At least two alternatively spliced transcript variants encoding distinct isoforms have been described.

**Gene ID:**

PLPP1

**Uniprot**

O14494

**Synonyms:**

phosphatidic acid, phosphatase type 2A

**Immunogen:**

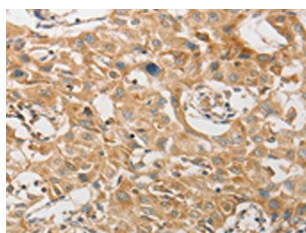
Synthetic peptide of human PPAP2A.

**Storage:**

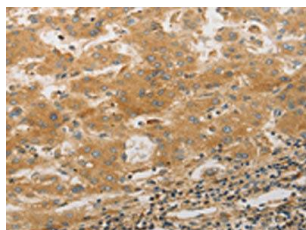
-20&deg; C, pH7.4 PBS, 0.05% NaN3, 40% Glycerol

## Product Images

---



The image on the left is immunohistochemistry of paraffin-embedded Human lung cancer tissue using PACO18328(PPAP2A Antibody) at dilution 1/50, on the right is treated with synthetic peptide. (Original magnification: x—200).



The image on the left is immunohistochemistry of paraffin-embedded Human liver cancer tissue using PACO18328(PPAP2A Antibody) at dilution 1/50, on the right is treated with synthetic peptide. (Original magnification: x—200).