

P2RY6 Antibody



PACO18323

Product Information

Size:

50ul

Reactivity:

Human, Mouse, Rat

Source:

Rabbit

Isotype:

IgG

Applications:

ELISA, WB, IHC

Recommended dilutions:

ELISA:1:1000-1:5000, WB:1:200-1:1000,
IHC:1:100-1:300

Protein Background:

The product of this gene belongs to the family of G-protein coupled receptors. This family has several receptor subtypes with different pharmacological selectivity, which overlaps in some cases, for various adenosine and uridine nucleotides. This receptor is responsive to UDP, partially responsive to UTP and ADP, and not responsive to ATP. Four transcript variants encoding the same isoform have been identified for this gene.

Gene ID:

P2RY6

Uniprot

Q15077

Synonyms:

pyrimidinergic receptor P2Y, G-protein coupled, 6

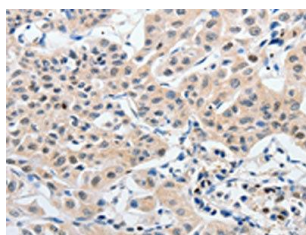
Immunogen:

Synthetic peptide of human P2RY6.

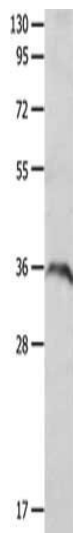
Storage:

-20° C, pH7.4 PBS, 0.05% NaN₃, 40% Glycerol

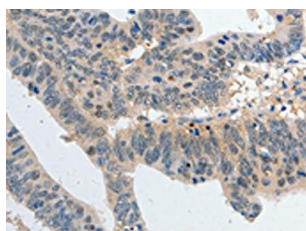
Product Images



The image on the left is immunohistochemistry of paraffin-embedded Human lung cancer tissue using PACO18323(P2RY6 Antibody) at dilution 1/80, on the right is treated with synthetic peptide. (Original magnification: x—200).



Gel: 10%SDS-PAGE, Lysate: 40 μ g, Lane: Mouse spleen tissue, Primary antibody: PACO18323(P2RY6 Antibody) at dilution 1/650, Secondary antibody: Goat anti rabbit IgG at 1/8000 dilution, Exposure time: 1 minute.



The image on the left is immunohistochemistry of paraffin-embedded Human colon cancer tissue using PACO18323(P2RY6 Antibody) at dilution 1/80, on the right is treated with synthetic peptide. (Original magnification: x—200).