

PACO18302

---

## Product Information

**Size:**

50ul

**Reactivity:**

Human, Mouse, Rat

**Source:**

Rabbit

**Isotype:**

IgG

**Applications:**

ELISA, IHC

**Recommended dilutions:**

ELISA:1:2000-1:5000, IHC:1:25-1:100

**Protein Background:**

This gene encodes a member of the glutamate-gated ion channel protein family. The encoded protein is an N-methyl-D-aspartate (NMDA) receptor subunit. NMDA receptors are both ligand-gated and voltage-dependent, and are involved in long-term potentiation, an activity-dependent increase in the efficiency of synaptic transmission thought to underlie certain kinds of memory and learning. These receptors are permeable to calcium ions, and activation results in a calcium influx into post-synaptic cells, which results in the activation of several signaling cascades. Disruption of this gene is associated with focal epilepsy and speech disorder with or without mental retardation. Alternative splicing results in multiple transcript variants.

**Gene ID:**

GRIN2A

**Uniprot**

Q12879

**Synonyms:**

glutamate receptor, ionotropic, N-methyl D-aspartate 2A

**Immunogen:**

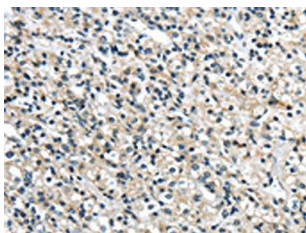
Synthetic peptide of human GRIN2A.

**Storage:**

-20&deg; C, pH7.4 PBS, 0.05% NaN<sub>3</sub>, 40% Glycerol

## Product Images

---



The image on the left is immunohistochemistry of paraffin-embedded Human prostate cancer tissue using PACO18302(GRIN2A Antibody) at dilution 1/35, on the right is treated with synthetic peptide. (Original magnification: x—200).