

NTSR1 Antibody



PACO18298

Product Information

Size:

50ul

Reactivity:

Human

Source:

Rabbit

Isotype:

IgG

Applications:

ELISA, WB

Recommended dilutions:

ELISA:1:2000-1:10000, WB:1:1000-1:5000

Protein Background:

Neurotensin receptor 1 belongs to the large superfamily of G-protein coupled receptors. NTSR1 mediates the multiple functions of neurotensin, such as hypotension, hyperglycemia, hypothermia, antinociception, and regulation of intestinal motility and secretion.

Gene ID:

NTSR1

Uniprot

P30989

Synonyms:

neurotensin receptor 1 (high affinity)

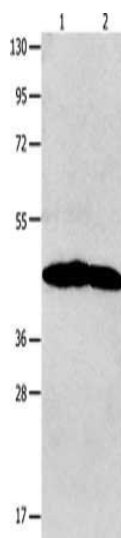
Immunogen:

Synthetic peptide of human NTSR1.

Storage:

-20° C, pH7.4 PBS, 0.05% NaN₃, 40% Glycerol

Product Images



Gel: 10+12%SDS-PAGE, Lysate: 40 μ g, Lane 1-2: Jurkat cells, 231 cells, Primary antibody: PACO18298(NTSR1 Antibody) at dilution 1/1200, Secondary antibody: Goat anti rabbit IgG at 1/8000 dilution, Exposure time: 5 minutes.