

### Product Information

**Size:**

50ul

**Reactivity:**

Human, Mouse, Rat

**Source:**

Rabbit

**Isotype:**

IgG

**Applications:**

ELISA, WB, IHC

**Recommended dilutions:**

ELISA:1:1000-1:5000, WB:1:500-1:2000,  
IHC:1:25-1:100

**Protein Background:**

This gene product belongs to the 14-3-3 family of proteins which mediate signal transduction by binding to phosphoserine-containing proteins. This highly conserved protein family is found in both plants and mammals, and this protein is 99% identical to the mouse and rat orthologs. This gene is upregulated in patients with amyotrophic lateral sclerosis. It contains in its 5' UTR a 6 bp tandem repeat sequence which is polymorphic, however, there is no correlation between the repeat number and the disease.

**Gene ID:**

YWHAQ

**Uniprot**

P27348

**Synonyms:**

tyrosine 3-monooxygenase/tryptophan 5-monooxygenase activation protein, theta polypeptide

**Immunogen:**

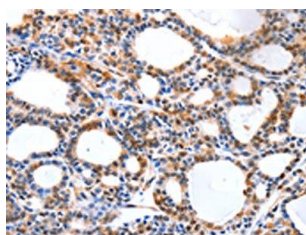
Synthetic peptide of human YWHAQ.

**Storage:**

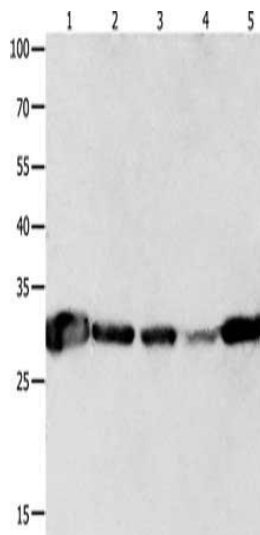
-20&deg; C, pH7.4 PBS, 0.05% NaN<sub>3</sub>, 40% Glycerol

## Product Images

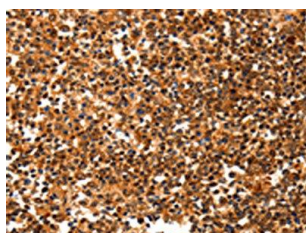
---



The image on the left is immunohistochemistry of paraffin-embedded Human thyroid cancer tissue using PACO18272(YWHAQ Antibody) at dilution 1/20, on the right is treated with synthetic peptide. (Original magnification: x—200).



Gel: 10+12%SDS-PAGE, Lysate: 40 &mu; g, Lane 1-5: Mouse brain tissue, A549 cells, human lymphoma tissue, NIH/3T3 cells, human colon cancer tissue, Primary antibody: PACO18272(YWHAQ Antibody) at dilution 1/300, Secondary antibody: Goat anti rabbit IgG at 1/8000 dilution, Exposure time: 5 seconds.



The image on the left is immunohistochemistry of paraffin-embedded Human tonsil tissue using PACO18272(YWHAQ Antibody) at dilution 1/20, on the right is treated with synthetic peptide. (Original magnification: x—200).