

MMP24 Antibody



PACO18239

Product Information

Size:

50ul

Reactivity:

Human, Mouse, Rat

Source:

Rabbit

Isotype:

IgG

Applications:

ELISA, IHC

Recommended dilutions:

ELISA:1:2000-1:5000, IHC:1:25-1:100

Protein Background:

Proteins of the matrix metalloproteinase (MMP) family are involved in the breakdown of extracellular matrix in normal physiological processes, such as embryonic development, reproduction, and tissue remodeling, as well as in disease processes, such as arthritis and metastasis. Most MMP's are secreted as inactive proproteins which are activated when cleaved by extracellular proteinases.

Gene ID:

MMP24

Uniprot

Q9Y5R2

Synonyms:

matrix metalloproteinase 24 (membrane-inserted)

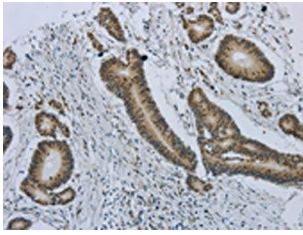
Immunogen:

Synthetic peptide of human MMP24.

Storage:

-20°C; C, pH7.4 PBS, 0.05% NaN₃, 40% Glycerol

Product Images



The image on the left is immunohistochemistry of paraffin-embedded Human colorectal cancer tissue using PACO18239(MMP24 Antibody) at dilution 1/25, on the right is treated with synthetic peptide. (Original magnification: x—200).