

Product Information

Size:

50ul

Reactivity:

Human, Mouse

Source:

Guinea pig

Isotype:

IgG

Applications:

ELISA, WB

Recommended dilutions:

ELISA:1:1000-1:2000, WB:1:200-1:1000

Protein Background:

This gene encodes a member of the a member of the C1q/tumor necrosis factor superfamily. The encoded protein may be a component of basement membranes and may play a role in cell adhesion. This gene is contained entirely within the 3' UTR of the membrane frizzled-related protein gene on chromosome 11q23 and both genes are expressed from a bicistronic transcript. Mutations in this gene have been associated with late-onset retinal degeneration.

Gene ID:

C1QTNF5

Uniprot

Q9BXJ0

Synonyms:

C1q and tumor necrosis factor related protein 5

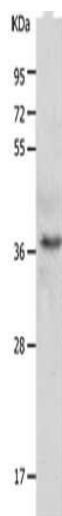
Immunogen:

Synthetic peptide of human C1QTNF5.

Storage:

-20° C, pH7.4 PBS, 0.05% NaN3, 40% Glycerol

Product Images



Gel: 10+12%SDS-PAGE, Lysate: 40 μ g, Lane: A549 cells, Primary antibody: PACO18215(C1QTNF5 Antibody) at dilution 1/300, Secondary antibody: Donkey anti Guinea pig IgG at 1/8000 dilution, Exposure time: 5 seconds.