

PACO18174

Product Information

Size:

50ul

Reactivity:

Human, Mouse, Rat

Source:

Rabbit

Isotype:

IgG

Applications:

ELISA, IHC

Recommended dilutions:

ELISA:1:1000-1:2000, IHC:1:15-1:50

Protein Background:

This gene encodes a leucine-rich protein that has multiple pentatricopeptide repeats (PPR). The precise role of this protein is unknown but studies suggest it may play a role in cytoskeletal organization, vesicular transport, or in transcriptional regulation of both nuclear and mitochondrial genes. The protein localizes primarily to mitochondria and is predicted to have an N-terminal mitochondrial targeting sequence. Mutations in this gene are associated with the French-Canadian type of Leigh syndrome.

Gene ID:

LRPPRC

Uniprot

P42704

Synonyms:

leucine-rich pentatricopeptide repeat containing

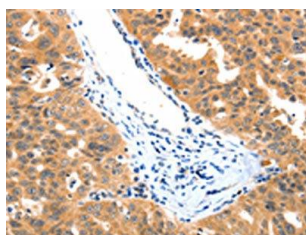
Immunogen:

Synthetic peptide of human LRPPRC.

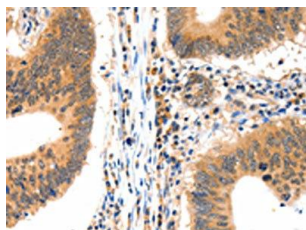
Storage:

-20° C, pH7.4 PBS, 0.05% NaN₃, 40% Glycerol

Product Images



The image on the left is immunohistochemistry of paraffin-embedded Human ovarian cancer tissue using PACO18174(LRPPRC Antibody) at dilution 1/15, on the right is treated with synthetic peptide. (Original magnification: x—200).



The image on the left is immunohistochemistry of paraffin-embedded Human colon cancer tissue using PACO18174(LRPPRC Antibody) at dilution 1/15, on the right is treated with synthetic peptide. (Original magnification: x—200).