

Product Information

Size:

50ul

Reactivity:

Human, Mouse

Source:

Rabbit

Isotype:

IgG

Applications:

ELISA, IHC

Recommended dilutions:

ELISA:1:2000-1:10000, IHC:1:50-1:200

Protein Background:

This gene encodes a transmembrane low-density lipoprotein receptor that binds and internalizes ligands in the process of receptor-mediated endocytosis. This protein also acts as a co-receptor with Frizzled protein family members for transducing signals by Wnt proteins and was originally cloned on the basis of its association with type 1 diabetes mellitus in humans. This protein plays a key role in skeletal homeostasis and many bone density related diseases are caused by mutations in this gene. Mutations in this gene also cause familial exudative vitreoretinopathy.

Gene ID:

LRP5

Uniprot

O75197

Synonyms:

low density lipoprotein receptor-related protein 5

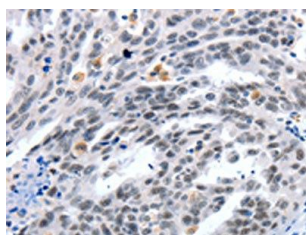
Immunogen:

Synthetic peptide of human LRP5.

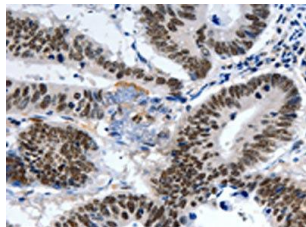
Storage:

-20° C, pH7.4 PBS, 0.05% NaN3, 40% Glycerol

Product Images



The image on the left is immunohistochemistry of paraffin-embedded Human ovarian cancer tissue using PACO18168(LRP5 Antibody) at dilution 1/55, on the right is treated with synthetic peptide. (Original magnification: x—200).



The image on the left is immunohistochemistry of paraffin-embedded Human colon cancer tissue using PACO18168(LRP5 Antibody) at dilution 1/55, on the right is treated with synthetic peptide. (Original magnification: x—200).