

PACO18114

---

## Product Information

**Size:**

50ul

**Reactivity:**

Human

**Source:**

Rabbit

**Isotype:**

IgG

**Applications:**

ELISA, IHC

**Recommended dilutions:**

ELISA:1:1000-1:10000, IHC:1:20-1:100

**Protein Background:**

IRS4 encodes the insulin receptor substrate 4, a cytoplasmic protein that contains many potential tyrosine and serine/threonine phosphorylation sites. Tyrosine-phosphorylated IRS4 protein has been shown to associate with cytoplasmic signalling molecules that contain SH2 domains. The IRS4 protein is phosphorylated by the insulin receptor tyrosine kinase upon receptor stimulation.

**Gene ID:**

IRS4

**Uniprot**

O14654

**Synonyms:**

insulin receptor substrate 4

**Immunogen:**

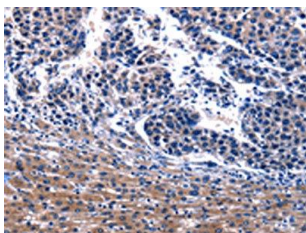
Synthetic peptide of human IRS4.

**Storage:**

-20&deg; C, pH7.4 PBS, 0.05% NaN<sub>3</sub>, 40% Glycerol

## Product Images

---



The image on the left is immunohistochemistry of paraffin-embedded Human liver cancer tissue using PACO18114(IRS4 Antibody) at dilution 1/17, on the right is treated with synthetic peptide. (Original magnification: x—200).