

## Product Information

**Size:**

50ul

**Reactivity:**

Human

**Source:**

Rabbit

**Isotype:**

IgG

**Applications:**

ELISA, WB

**Recommended dilutions:**

ELISA:1:1000-1:5000, WB:1:500-1:2000

**Protein Background:**

This gene encodes an apoptosis inhibitory protein whose expression prevents apoptosis after growth factor deprivation. This protein suppresses the transcription factor E2F1-induced apoptosis and also interacts with, and negatively regulates Acinus, a nuclear factor involved in apoptotic DNA fragmentation. Its depletion enhances the cytotoxic action of the chemotherapeutic drugs. Multiple alternatively spliced transcript variants encoding different isoforms have been identified.

**Gene ID:**

API5

**Uniprot**

Q9BZZ5

**Synonyms:**

apoptosis inhibitor 5

**Immunogen:**

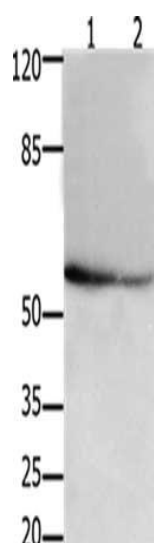
Synthetic peptide of human API5.

**Storage:**

-20&deg; C, pH7.4 PBS, 0.05% NaN<sub>3</sub>, 40% Glycerol

## Product Images

---



Gel: 10%SDS-PAGE, Lysate: 30  $\mu$ g, Lane 1-2: 293T cells, hela cells,  
Primary antibody: PACO18086(API5 Antibody) at dilution 1/250,  
Secondary antibody: Goat anti rabbit IgG at 1/8000 dilution, Exposure  
time: 2 minutes.