

Product Information

Size:

50ul

Reactivity:

Human, Mouse

Source:

Rabbit

Isotype:

IgG

Applications:

ELISA, WB

Recommended dilutions:

ELISA:1:1000-1:5000, WB:1:500-1:2000

Protein Background:

The protein encoded by this gene is the alpha subunit of the heterodimeric receptor for colony stimulating factor 2, a cytokine which controls the production, differentiation, and function of granulocytes and macrophages. The encoded protein is a member of the cytokine family of receptors. This gene is found in the pseudoautosomal region (PAR) of the X and Y chromosomes. Multiple transcript variants encoding different isoforms have been found for this gene, with some of the isoforms being membrane-bound and others being soluble.

Gene ID:

CSF2RA

Uniprot

P15509

Synonyms:

colony stimulating factor 2 receptor, alpha, low-affinity (granulocyte-macrophage)

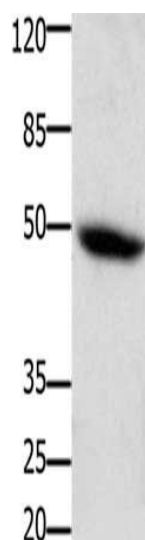
Immunogen:

Synthetic peptide of human CSF2RA.

Storage:

-20° C, pH7.4 PBS, 0.05% NaN3, 40% Glycerol

Product Images



Gel: 10+12%SDS-PAGE, Lysate: 30 μ g, Lane: Mouse heart tissue, Primary antibody: PACO18009(CSF2RA Antibody) at dilution 1/400, Secondary antibody: Goat anti rabbit IgG at 1/8000 dilution, Exposure time: 5 minutes.