

# SLC2A11 Antibody



PACO18005

---

## Product Information

**Size:**

50ul

**Reactivity:**

Human

**Source:**

Rabbit

**Isotype:**

IgG

**Applications:**

ELISA, IHC

**Recommended dilutions:**

ELISA:1:2000-1:10000, IHC:1:100-1:300

**Protein Background:**

Solute carrier family 2, facilitated glucose transporter member 11 (SLC2A11) also known as glucose transporter type 10/11 (GLUT-10/11) is a protein that in humans is encoded by the SLC2A11 gene. SLC2A11 belongs to a family of plasma membrane proteins that mediate transport of sugars across the membrane by facilitative diffusion.

**Gene ID:**

SLC2A11

**Uniprot**

Q9BYW1

**Synonyms:**

solute carrier family 2 (facilitated glucose transporter), member 11

**Immunogen:**

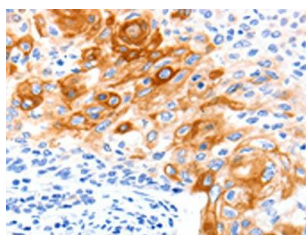
Synthetic peptide of human SLC2A11.

**Storage:**

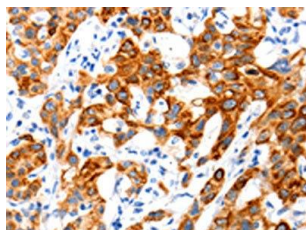
-20&deg; C, pH7.4 PBS, 0.05% NaN<sub>3</sub>, 40% Glycerol

## Product Images

---



The image on the left is immunohistochemistry of paraffin-embedded Human cervical cancer tissue using PACO18005(SLC2A11 Antibody) at dilution 1/140, on the right is treated with synthetic peptide. (Original magnification: x—200).



The image on the left is immunohistochemistry of paraffin-embedded Human lung cancer tissue using PACO18005(SLC2A11 Antibody) at dilution 1/140, on the right is treated with synthetic peptide. (Original magnification: x—200).