

Product Information

Size:

50ul

Reactivity:

Human, Mouse

Source:

Rabbit

Isotype:

IgG

Applications:

ELISA, WB, IHC

Recommended dilutions:

ELISA:1:1000-1:5000, WB:1:500-1:2000,
IHC:1:25-1:100

Protein Background:

This gene belongs to the chemokine-like factor gene superfamily, a novel family that is similar to the chemokine and the transmembrane 4 superfamilies of signaling molecules. This gene is one of several chemokine-like factor genes located in a cluster on chromosome 16. Alternatively spliced transcript variants containing different 5' UTRs, but encoding the same protein, have been identified. [.

Gene ID:

CMTM3

Uniprot

Q96MX0

Synonyms:

CKLF-like MARVEL transmembrane domain containing 3

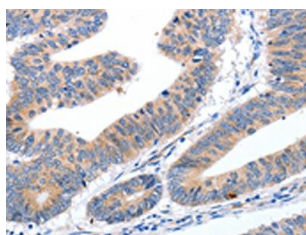
Immunogen:

Synthetic peptide of human CMTM3.

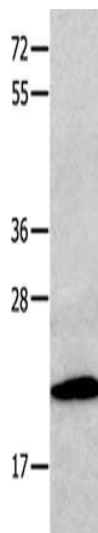
Storage:

-20° C, pH7.4 PBS, 0.05% NaN3, 40% Glycerol

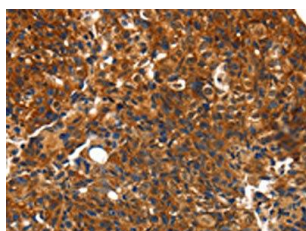
Product Images



The image on the left is immunohistochemistry of paraffin-embedded Human colon cancer tissue using PACO17948(CMTM3 Antibody) at dilution 1/10, on the right is treated with synthetic peptide. (Original magnification: x—200).



Gel: 10+12%SDS-PAGE, Lysate: 40 μ g, Lane: Human fetal kidney tissue, Primary antibody: PACO17948(CMTM3 Antibody) at dilution 1/200, Secondary antibody: Goat anti rabbit IgG at 1/8000 dilution, Exposure time: 1 minute.



The image on the left is immunohistochemistry of paraffin-embedded Human breast cancer tissue using PACO17948(CMTM3 Antibody) at dilution 1/10, on the right is treated with synthetic peptide. (Original magnification: x—200).