

## Product Information

**Size:**

50ul

**Reactivity:**

Human, Mouse

**Source:**

Rabbit

**Isotype:**

IgG

**Applications:**

ELISA, WB

**Recommended dilutions:**

ELISA:1:1000-1:5000, WB:1:500-1:2000

**Protein Background:**

This gene belongs to the chemokine-like factor gene superfamily. This family of genes encodes multi-pass membrane proteins that are similar to both the chemokine and the transmembrane 4 superfamilies of signaling molecules. Alternate transcriptional splice variants of this gene, encoding different isoforms, have been characterized. Highly expressed in the brain.

**Gene ID:**

CMTM5

**Uniprot**

Q96DZ9

**Synonyms:**

CKLF-like MARVEL transmembrane domain containing 5

**Immunogen:**

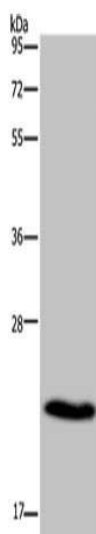
Synthetic peptide of human CMTM5.

**Storage:**

-20&deg; C, pH7.4 PBS, 0.05% NaN<sub>3</sub>, 40% Glycerol

## Product Images

---



Gel: 12+15%SDS-PAGE, Lysate: 40  $\mu$ g, Lane: Mouse heart tissue, Primary antibody: PACO17942(CMTM5 Antibody) at dilution 1/400, Secondary antibody: Goat anti rabbit IgG at 1/8000 dilution, Exposure time: 1 minute.